

Leica Geosystems QuickStart Guide

Product Leica Cyclone REGISTER 360 2020.1
Date 12 November 2020
From HDS Software Product Management

Contents

Introduction	2
Installation	3
Licensing Setup	4
Basic Workflow	6
Launch	7
Basic Configuration	7
General Settings	8
.....	8
Link Settings	9
Cloud-to-Cloud options	9
Projects	10
Storage	11
General Registration Information	11
BLK360 Import	11
BLK2GO Import	18
Additional Import Options	25
Review and Optimize	28
Finalize	38
Report	40



Introduction

Welcome to Cyclone REGISTER 360. Below you will find a simple guide for getting started in the software.

Cyclone REGISTER 360 is designed to bring speed, scale and simplicity to your digital reality workflows thanks to a new visual project interface and guided workflows. New and experienced users alike will appreciate that the registration process has been streamlined while maintaining the uncompromising quality you have come to expect of Leica Geosystems' software solutions.

Many users will require little to no assistance to complete their first project while some users who are completely new to the registration process may find it helpful to read this quick start guide in full.

Please remember that every project will present its own challenges. This guide is not designed to address every possible scenario but rather to provide a framework which should be modified and amended based on project needs.

If you require more advanced help, please review the resources in the assistant panel (discussed below) or contact Leica Geosystems' expert support staff.

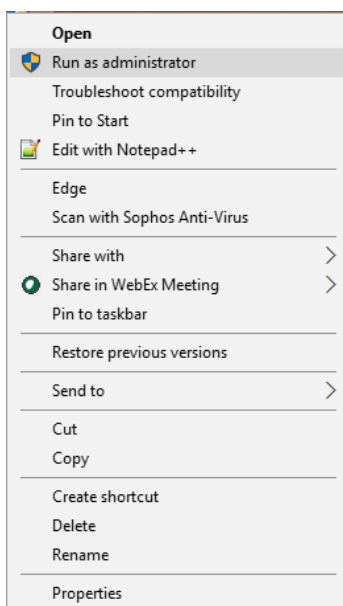
Thank you for choosing Cyclone REGISTER 360.

-The Leica Geosystems HDS Software Product Management Team

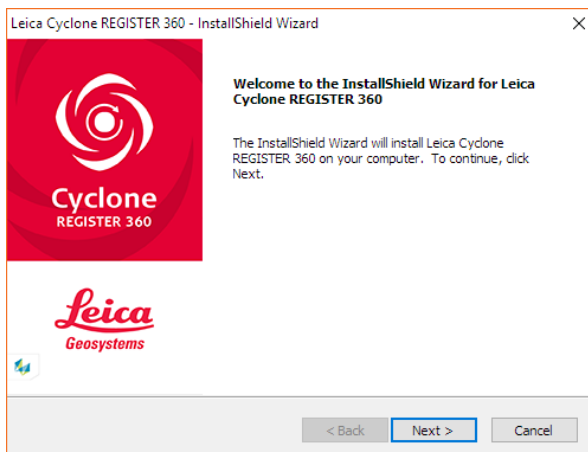
Installation

NOTE! You must have Administrative privileges on your computer to correctly install and license Cyclone REGISTER 360.

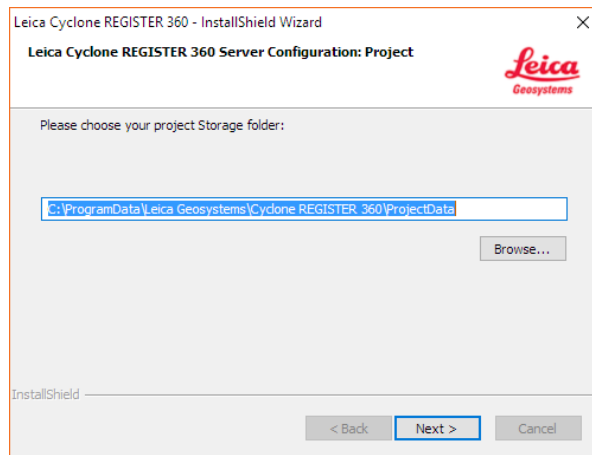
1. Right-click on the Cyclone REGISTER 360 Setup File and select "run as administrator".
 - The Cyclone REGISTER 360 installer can be downloaded from [here](#).
 - The Cyclone REGISTER 360 (BLK Edition) installer can be downloaded from [here](#).



2. Follow the directions in the InstallShield Wizard.



3. When prompted, choose your Project Storage location.



NOTE! The storage folder for Cyclone REGISTER 360 should NOT be the same folder as the JetStream Storage folder if JetStream is installed on the same computer.

4. Complete the installation by selecting “Finish”.

Licensing Setup

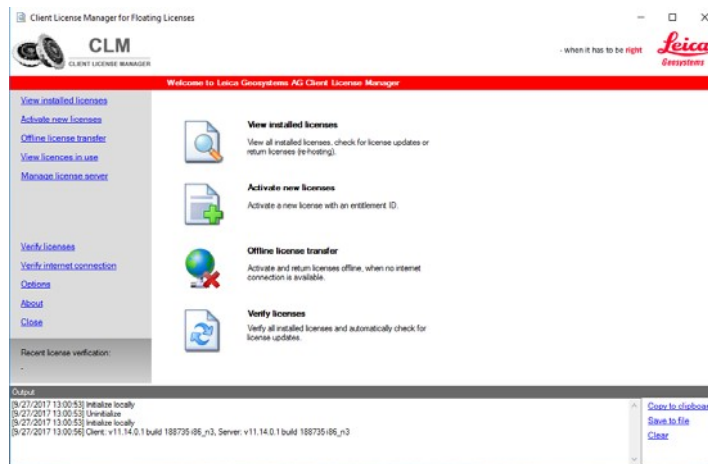
Leica Cyclone REGISTER 360 will run for any user with a valid Cyclone REGISTER license with current CCP or CCP valid as late as September 1, 2017. (It will run non-concurrently to Cyclone REGISTER.)

For users running Cyclone REGISTER 360 off its own license, please follow the below instructions to activate your license.

NOTE! Leica Cyclone REGISTER 360 is only supported by the latest version of the Leica Client License Manager (CLM), version 1.6.2 or newer.

NOTE! You must have an Internet connection to enable your license. If you do not, please review our “Leica Cyclone and CloudWorx Client License Management System” document that goes over setting up an Entitlement ID (i.e., license) off-line.

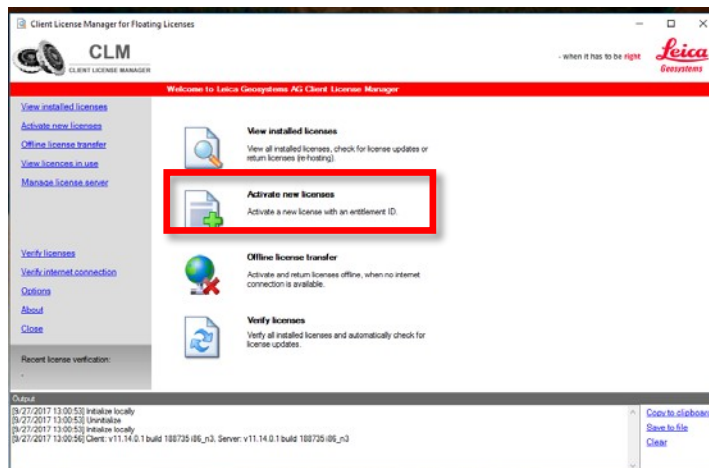
1. Once you have installed Cyclone, open the Client License Manager for **Floating** Licenses.



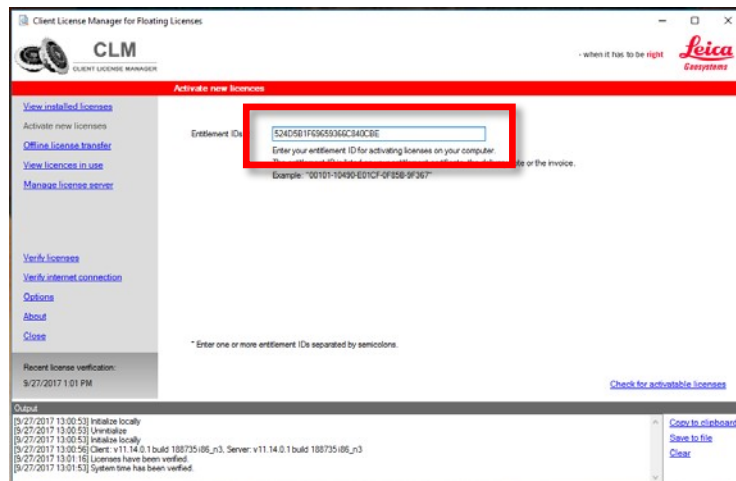
2. Located here: Start Menu/All Programs/Leica Geosystems/Client License Manager

NOTE! Be sure to choose the Floating option (there are two CLMs and the Nodelocked CLM will not activate your license)

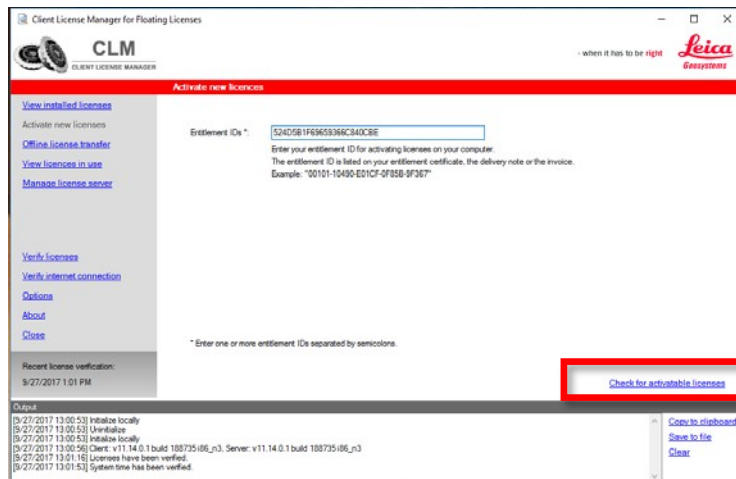
3. Choose the "Activate new licenses" option.



4. Enter your Entitlement IDs (EID) in the open field. To enter multiple EIDs separate them with a semicolon ";"



5. After you have entered your EID choose the "Check for Activatable licenses" link in the bottom right of the page



6. Once your licenses are activated you can start using Cyclone REGISTER 360.

Basic Workflow

Cyclone REGISTER 360 guides the user through the registration process. At the top of the software window you will see a workflow bar that includes four steps:

1. Import
2. Review and Optimize
3. Finalize
4. Report

These will be the four major stages of your project. Below, we will walk you through a basic end-to-end workflow within Cyclone REGISTER 360. **This is not intended to be exhaustive.** You should reference the built-in assistant panel and help files for more detailed guidance. If you need more information about any tool, hover over the button and press F1 to be sent to the glossary or command index entry for the button within the helpfile.

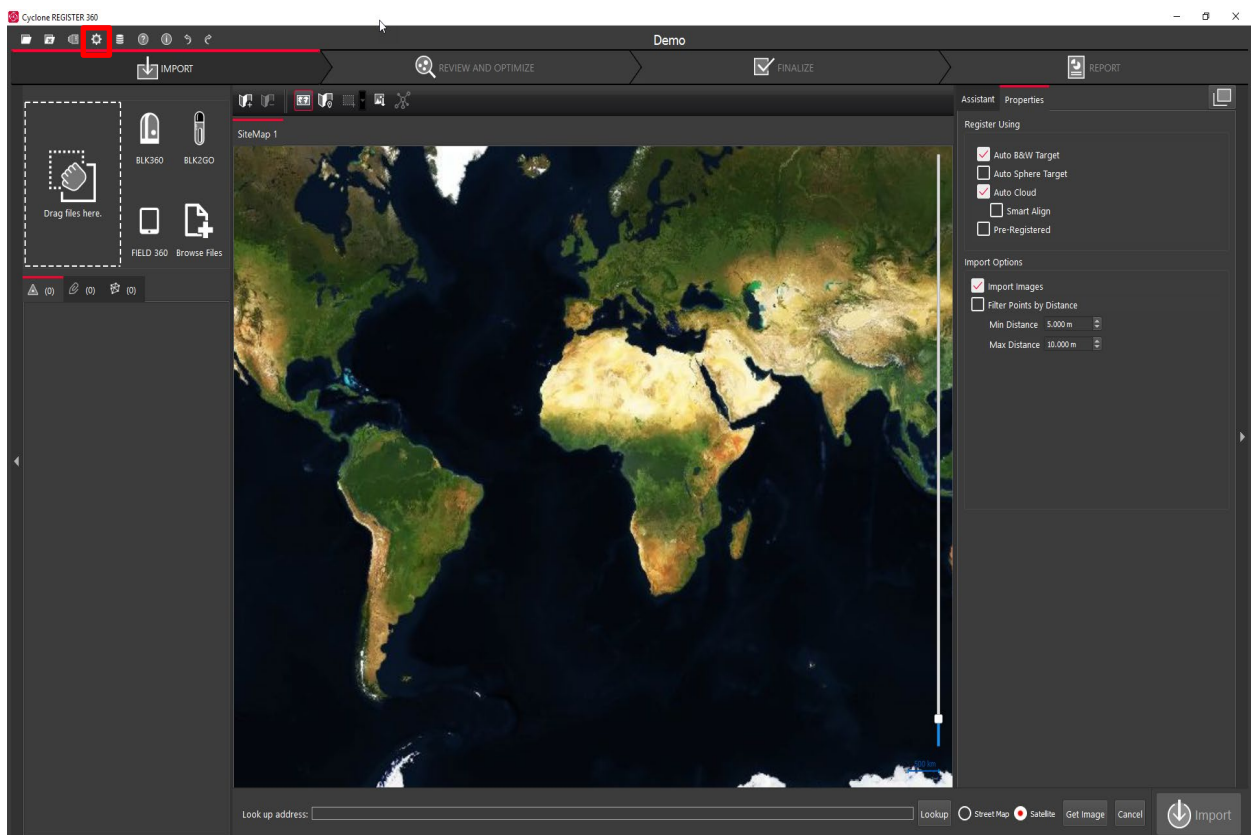
You may also wish to reference Leica Geosystem's e-learning platform [here](#).

Launch

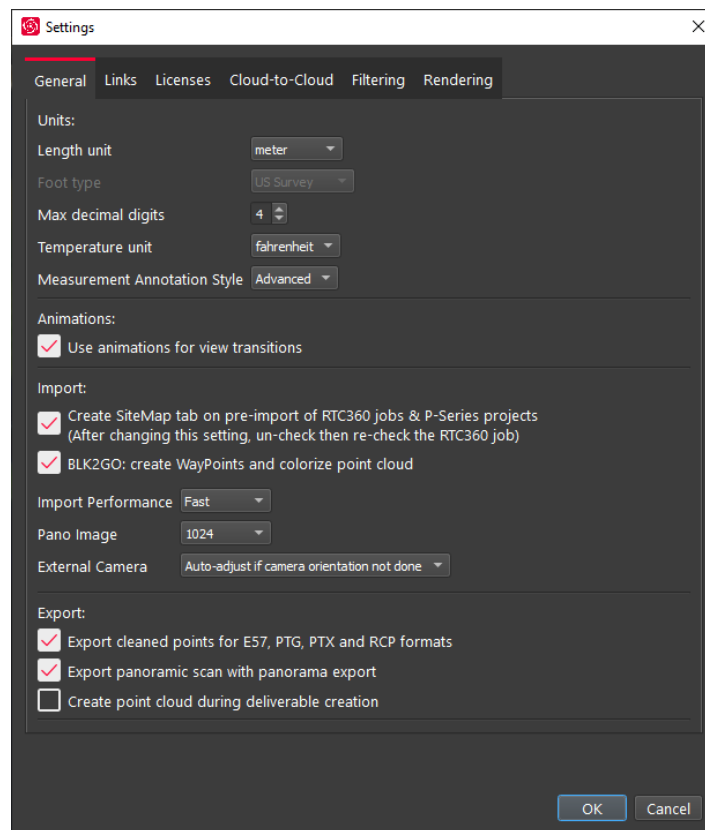
1. To begin, launch Cyclone REGISTER 360.
 - 1.1. The software will open on the Project Explorer Window.
2. Either open an existing project or click "Create New Project"
 - 2.1. Enter a project name and click "OK"

Basic Configuration

Once the program is opened you can access the settings options from the title tool bar in the upper left of the program.



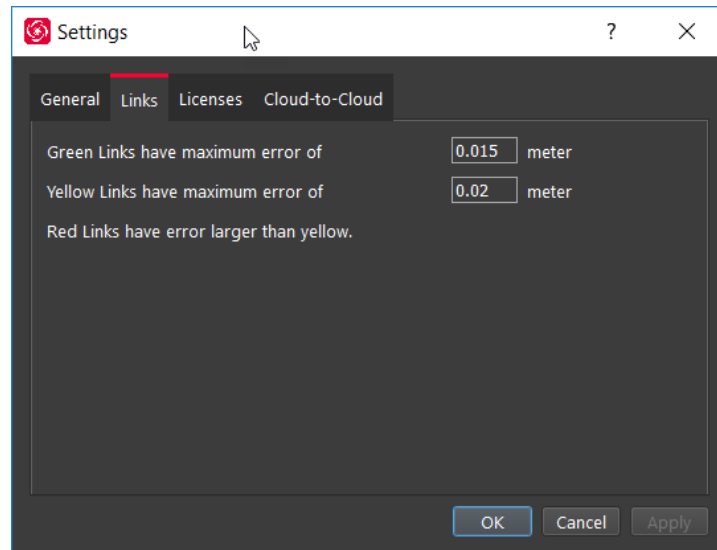
General Settings



Once you open the Settings dialog, the General tab will allow you to:

- Change your default units of length as well as set your preferred decimal precision.
- Turn off transition animations that occur when moving between setups or otherwise changing views.
- Have an option to Create SiteMap upon import of RTC360 or P-Series jobs.
- Have an option to Colorize BLK2GO data and create Pano WayPoints upon import.
- Set the import performance to Fast, Balanced, or Safe mode.
 - Use Safe mode if the program becomes unstable during import
- Set the Pano image resolution during import.
- External Camera: Sets if the program should auto adjust if it was not done before import. This is only used for the External Camera Kit for the P and C Series scanners.
- Export Cleaned points to e57, PTG, PTX and RCP
 - If enabled the exported data will not include data cleaned during processing in REGISTER 360
- If enabled, REGISTER 360 will not create a single point cloud when making a Finalized Registration. This saves time when exporting to formats that do not require a single point cloud- e57, ptx, ptg and RCP (setups)

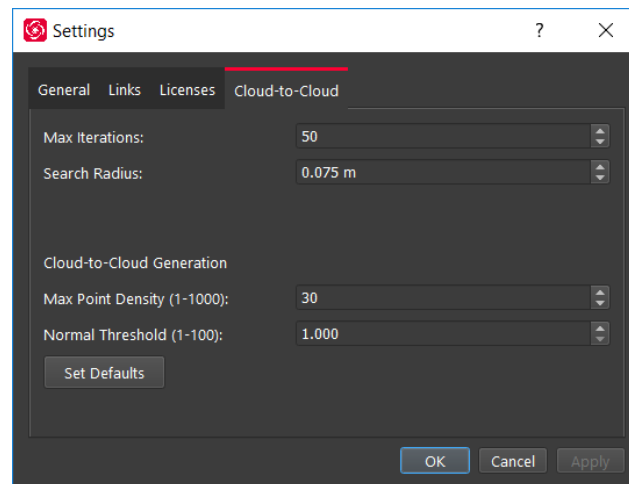
Link Settings



The Links tab allows you to customize your error thresholds for Links. You can adjust what levels of error will be represented by your green/yellow/red link lines. By default, these will be set to 0.015 and 0.02 m respectively.

Cloud-to-Cloud options

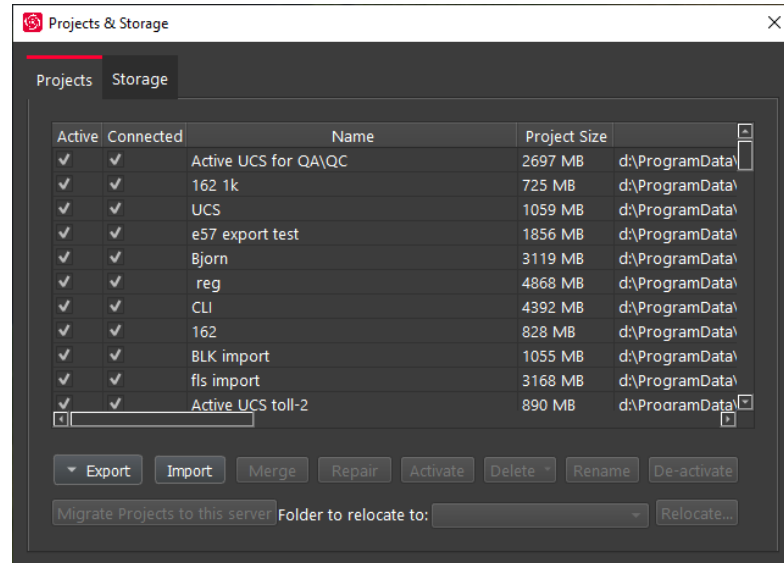
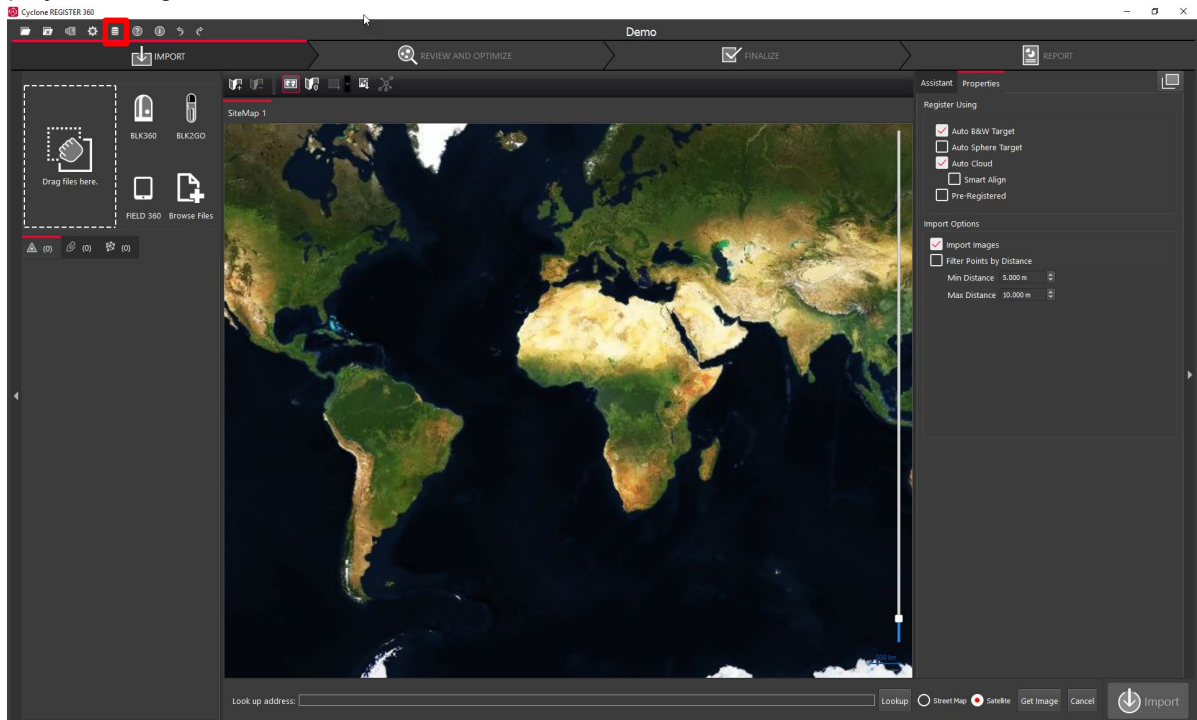
Options that control how Cloud-to-Cloud operates can be found in the setting menu.



- **Max Iterations:**
 - This is how many times the programs will try to fit the clouds together before completing the alignment.
- **Search Radius:**
 - This setting sets the search radius for matching surfaces
- **Max Point Density:**
 - Will increase the density of the Cloud-to-Cloud points used in the process
- **Normal Threshold:**
 - During Cloud-to-Cloud formation, the normal threshold is used to determine how valid the surfaces are. A higher value means that the surfaces do not need to be as valid. The result of a higher value would be more surfaces, but potentially lower validity of the surfaces created.

Projects

Click the Project & Storage icon in the upper left title bar to adjust storage folder locations and other project settings.



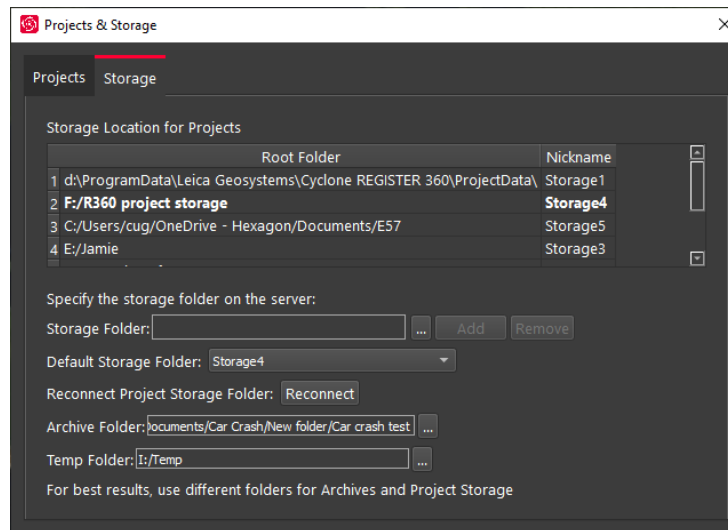
In this view, you can see all the projects that you have stored in your Project storage.

Here you can:

- Manage your saved projects
- Delete projects
- Copy a project to another storage location using the Relocate option.
- Archive or Import a Cyclone REGISTER 360 project (*.raf). To create a .raf file, select the project and click the Archive button.
- Import a saved archive file. To do so, simply place the .raf file inside of your Project Storage directory and then click the Import button. Cyclone REGISTER 360 will then provide you a list of

any archive it finds in that location that can be added to your active Projects.

- Repair project that have missing or corrupt files.
- Merge projects together.
- Rename a project.
- Delete or remove project from the project list.



Storage

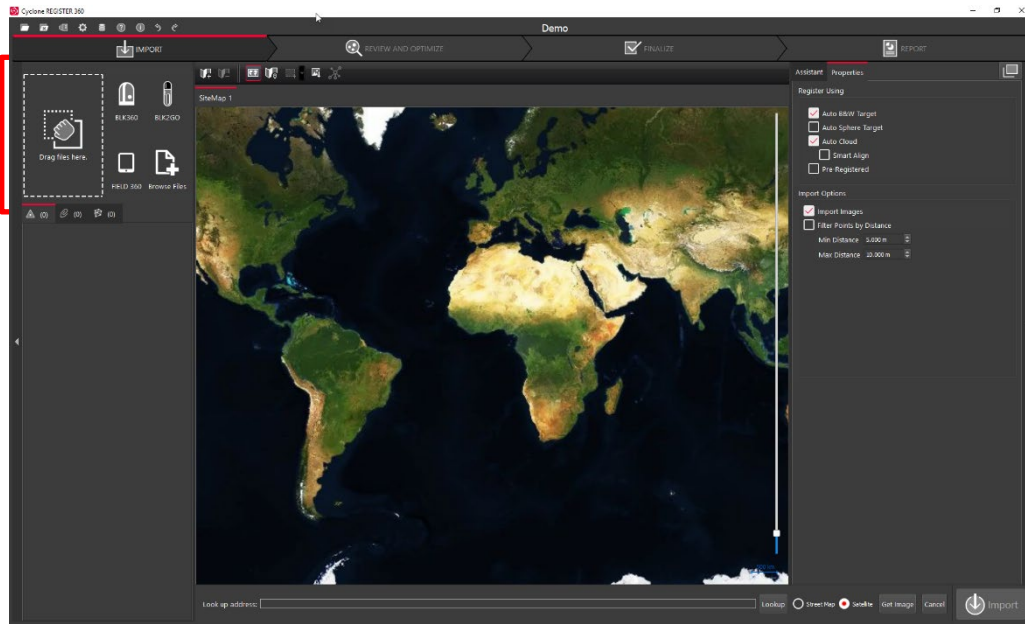
The Storage tab allows you to configure multiple Project Storage locations. You can use this feature to create and toggle between datasets on multiple drives. For best results, use internal SSD drives and create separate folders for Storage and Archive. Also allows the user to set a temp folder location. Reconnect is used to reconnect a project storage folder.

General Registration Information

- Cyclone REGISTER 360 requires 3 matching targets between setups to form a target link.
- Cloud to Cloud links can be used to join setups with less than 3 matching targets.
- Setups included in separate Sitemaps in the Import area will be registered into separate bundles.
- The maximum amount of auto-detected/shown links is 50. This applies to links found after Visual Alignment, Split View, and shown suggested links.
- You must have at least one Sitemap which has all setups in one bundle to proceed to the Finalize area.
- The bundle must be optimized successfully (no dotted Link lines) to proceed to the Finalize area.
- The minimum screen resolution supported is 1280x800.

BLK360 Import

1. You will now find yourself in the **Import** stage. You will notice on the left that there are three ways to bring data into Cyclone REGISTER 360.



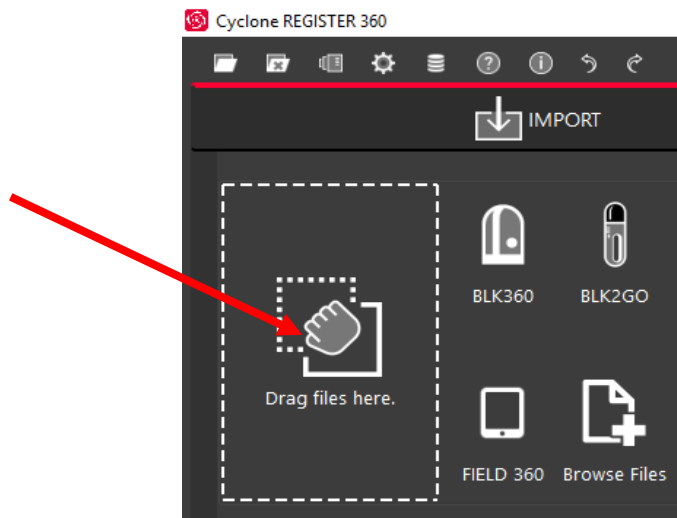
2. Cyclone REGISTER 360 can accept the following types of scan, image and text files:

File Types	Supported Formats
Binary Point Clouds	.e57 .ptg
Control File	.txt containing: Point number Northing Easting Elevation Comment
Imagery	.bmp .jpeg .png
FARO TLS data	.fls .fpr .fws FARO Raw
Leica HDS scanner data	BLK360 (direct via WiFi or .blk files from the BLK Data Manager utility) BLK2GO (direct via WiFi or .b2g files from the BLK Data Manager utility) C-Series

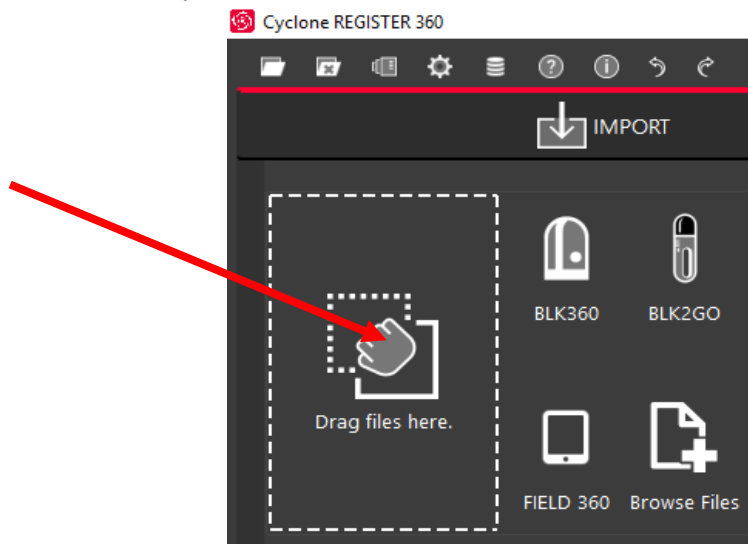
	P-Series
Text	.ptx
Z+F	.zfc .zfs .zprj

3. Different file types do not need to be added separately; they can all be added and imported together.

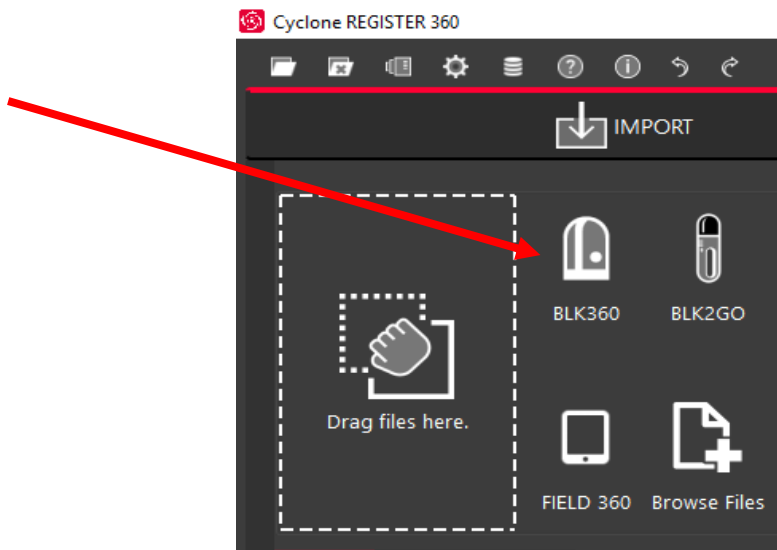
3.1. “Drag files here” allows you to drag-and-drop individual files, or a folder containing files, into the software.



3.2. “Browse Files” will launch a Windows File Explorer window through which you can navigate to the files to be imported.

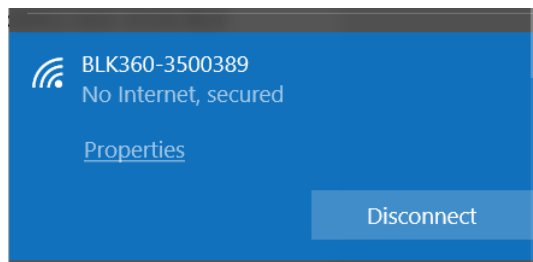


3.3. “Import BLK360” will launch a new Cyclone REGISTER 360 window that will allow you to connect to a local BLK360 Imaging Scanner and select individual files to import.

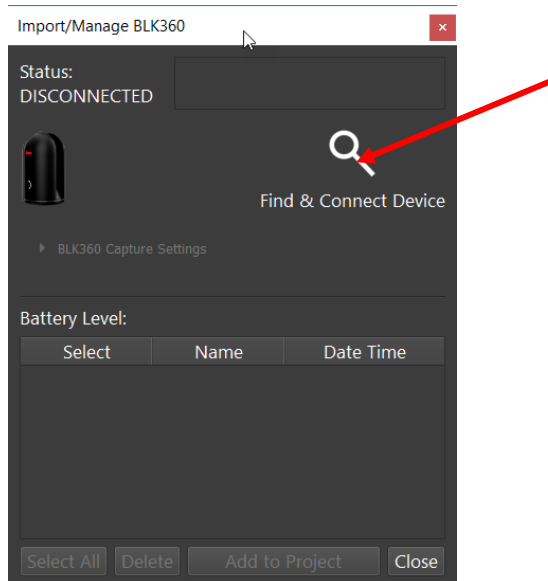


n

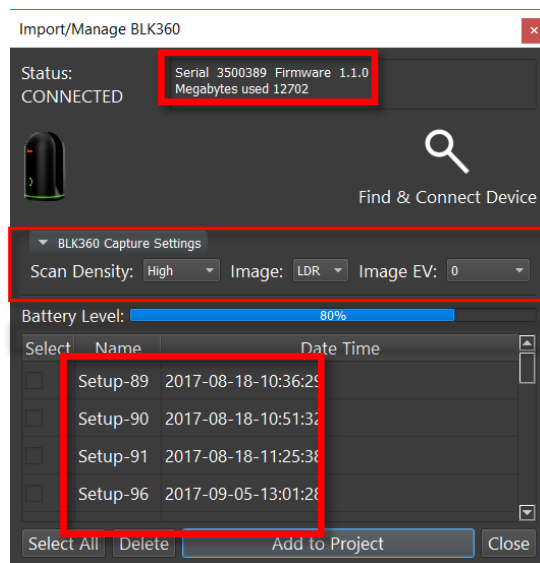
3.3.1. Connect your computer's WiFi to the BLK360 using the windows wireless connection (Windows 10 is used in this example). The wireless password is located on the inside of the battery door of the BLK360 scanner.



3.3.2. Click "Find & Connect Device"

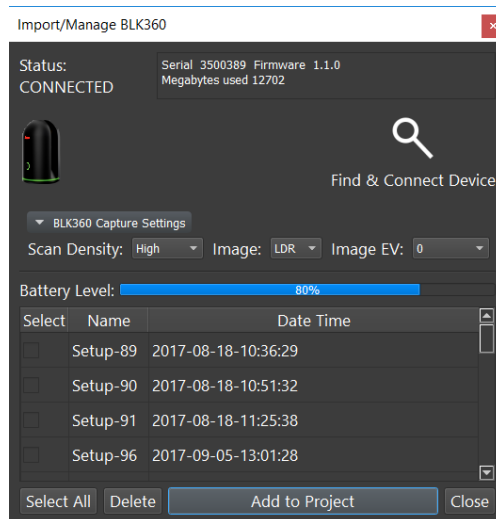


3.3.2.1. Once connected a list of scans is shown along with the Battery level, Serial number of the scanner, firmware version, memory used and Capture settings.

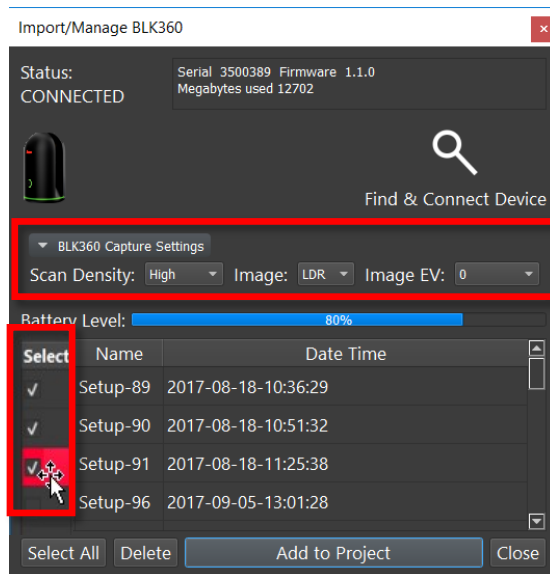


The scanner must have at least 20% power to enable the Download button.

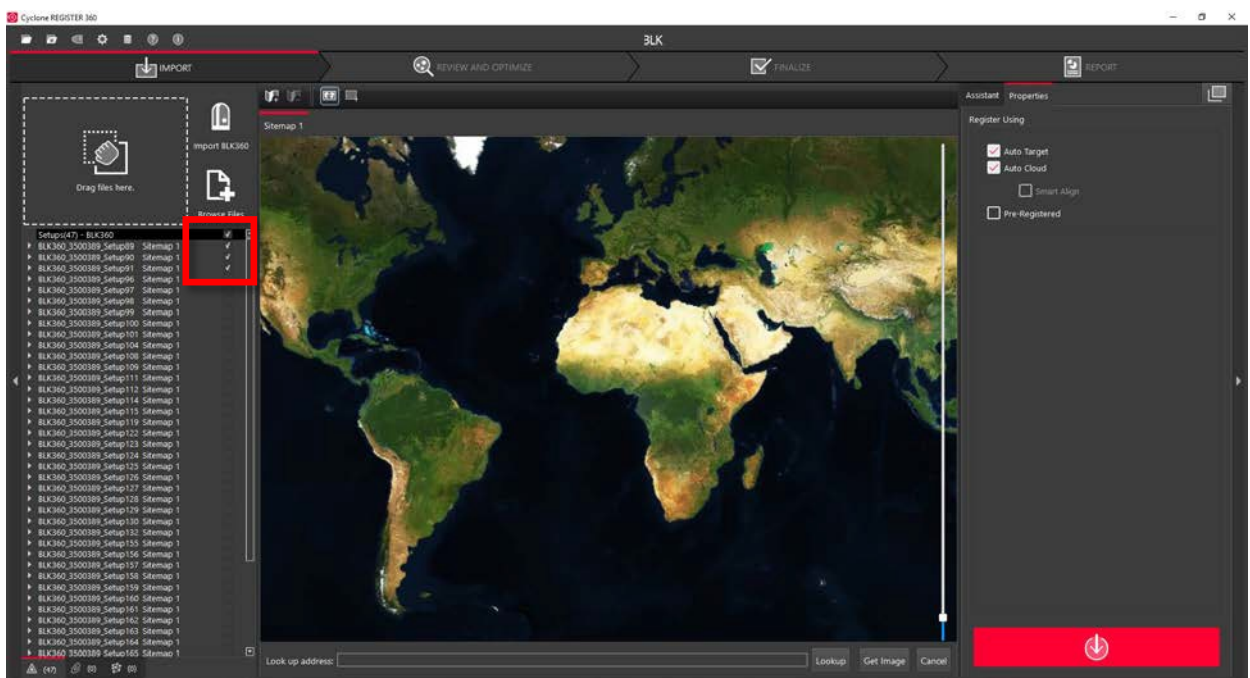
3.3.2.2. Select the scans to import by marking the check boxes next to each setup. Selecting scans in the BLK360 import dialog will check the scans for import in the Cyclone REGISTER 360 import area though all scans will be visible within the import area. Click "Download" when you have identified the scans you wish to work with.



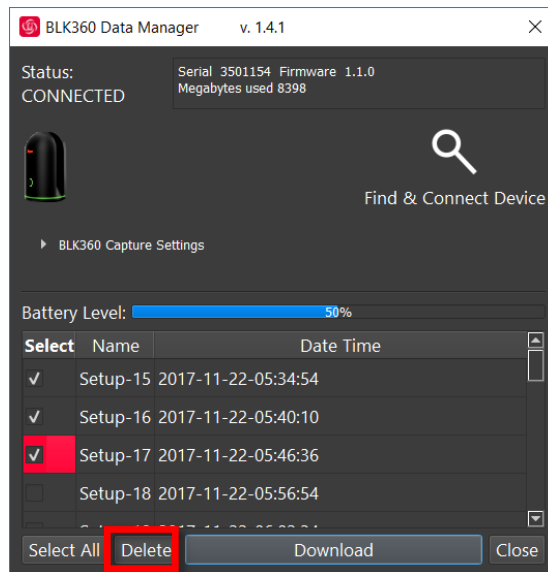
3.3.2.3. Capture settings can be changed in this dialog. Use the pull downs to select scan density (high, medium, low), image quality (LDR or HDR) and Image exposure (EV-5 to +5).



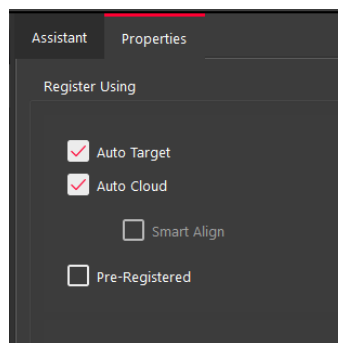
3.3.2.4. The **Add to Project** button will always display all scans within the Cyclone REGISTER 360 import area, however only scans which were selected within the import dialogue will be queued for import. The image below shows the three scans selected for import above checked for import.



3.3.2.5. You may also delete scans from your BLK360 from within this window. Select the scans by checking the boxes to the left of the scans and the click the **Delete** button. Once scans are deleted, they are permanently removed from the device so the user may wish to download them locally via the BLK360 Data Manager as a backup before any deletion from the machine.



4. Once you have added your data via one of the methods noted above, you will also notice on the right that there are three options for how to register the data you are bringing in which can be used for any of the above import types.



- 4.1. “Auto Target” should be used when Black and White targets are present within the data set. Cyclone REGISTER 360 will automatically search for these targets and register the setups based on those shared targets. Targets do not need to be picked, labelled or matched. Cyclone does it all automatically.
- 4.2. “Auto Cloud” should be used when importing unregistered data that does not contain targets. This setting will conduct a preliminary cloud-to-cloud alignment and register the setups based on shared geometry between scans. You do not need to pick this option. Cyclone REGISTER 360 does it all automatically.
 - 4.2.1. “SmartAlign” is a tool that will aid the Auto-Cloud search by lowering the number of links to search by only searching the links specified by the user. All setups not identified by the user will be compared to all other setups. Once SmartAlign is selected, links can be created between setups by time, distance, or by manually dragging one setup to another.

Note! The SmartAlign option will not be enabled unless a background image is in use (blank is fine) and setups have been dragged into the Sitemap area.

- 4.3. "Pre-Registered" should be used for data that has already been registered in another application. This setting will maintain the alignment and transformations present within that data set and generate the link objects unique to Cyclone REGISTER 360.
- 4.4. If no options are checked, Cyclone REGISTER 360 will import the files but will not attempt to form any links.

BLK2GO Import

The BLK2GO is a new scanning from Leica Geosystems which captures images and dimensionally accurate point clouds in real-time, using SLAM technology to record the user's trajectory through space.

The BLK2GO includes a new in-field mobile application, BLK Live, which tracks the user's position in real-time and provides 2D and 3D visualization while scanning, high-resolution image visualization (GeoTags) as well as device status such as battery or storage. Unlike Cyclone FIELD 360, BLK Live does not store project data.

The BLK2GO can be connected to Cyclone REGISTER 360 via Wi-Fi or USB cable. Once connected, Cyclone will show the Walks (unique capture events) listed in the import area.

The scanner has three panoramic cameras that are used to capture images every second which can be turned into panoramic setup locations along the trajectory (or walking path) of the scan. These images are also used to colorize the point cloud data. At import, the user will set an interval for how often these panoramic setups are created. The setups are known as WayPoints and are located along the scan path to show panoramic imagery for a more traditional setup location experience.

Upon import, Cyclone REGISTER 360 will import the point cloud data and pano images per user setting. The user can set the WayPoint creation every meter or more, along the trajectory. It is not necessary to create WayPoints to import BLK2GO data into Cyclone REGISTER 360.

The BLK2GO scanner also has one high-resolution detail camera. When the button is pressed, a 12-megapixel image will be captured from the front of the scanner. Upon import, the image is turned into a GeoTag which is accessible downstream in JetStream Viewer, TruView Enterprise and Cloud, the CloudWorx Family, Cyclone 3DR and Map360 via LGS files and JetStream Enterprise projects.

For more information about scanner operation please refer to the manual included with your scanner.

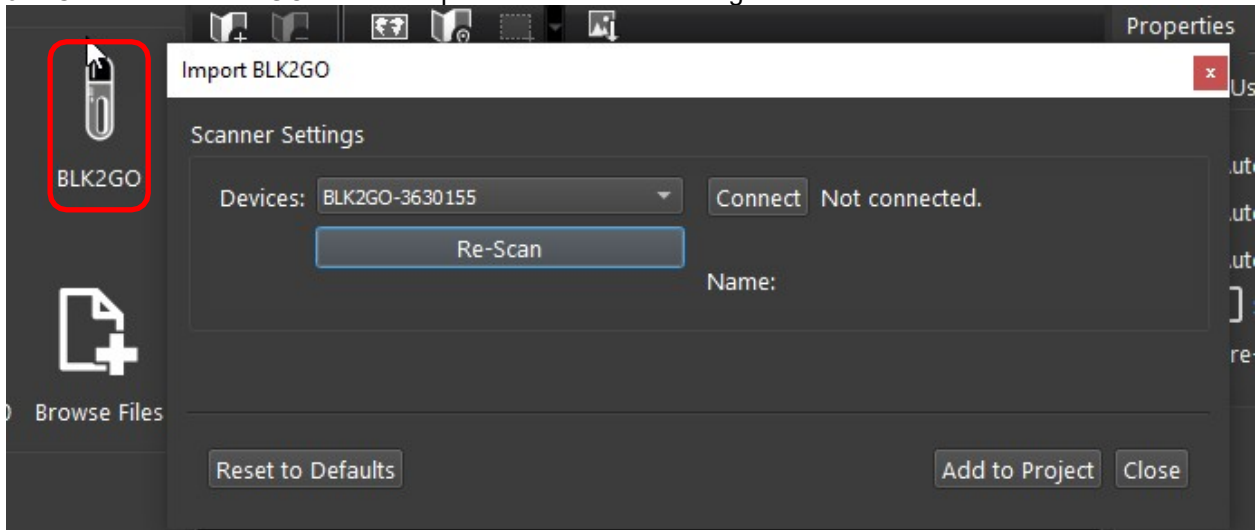
The BLK2GO scanner can also be connected to the BLK Live App for use on an Apple iPhone.

The below details the workflow for importing BLK2GO data into the Cyclone REGISTER 360 family of products:

WiFi import workflow:

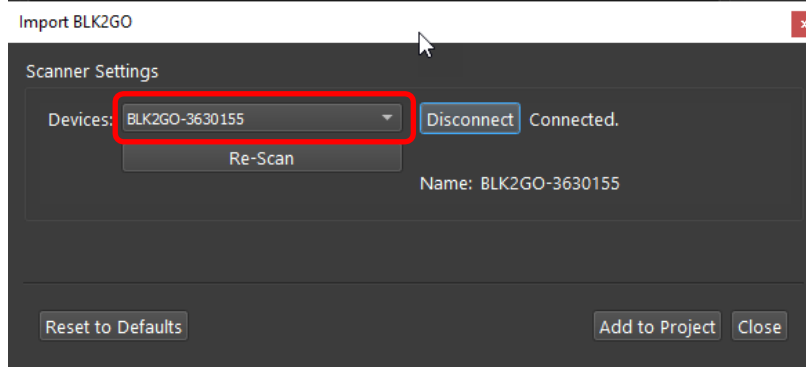
1. Connect to the wireless network of the BLK2GO scanner. SSID and password are listed in the battery compartment of the scanner.
2. Once connected, open Cyclone REGISTER 360 Standard or BLK Edition and create a project.

3. Click on the BLK2GO button to open the connection dialog:

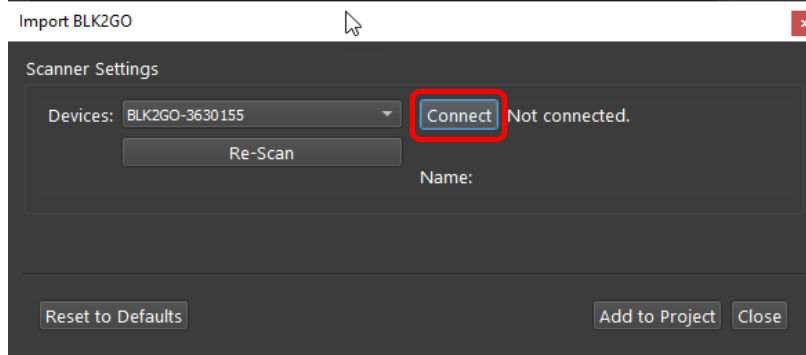


4. The available scanners will be listed by serial number.

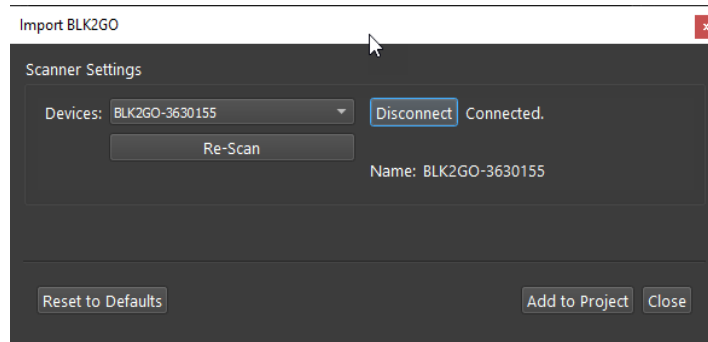
- If the dialog is open before a WiFi connection is made, use the **Re-Scan** button to detect scanners.



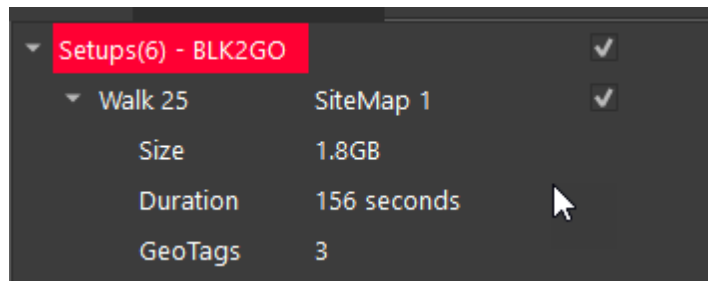
5. Click the **Connect** button to establish a connection to the scanner.



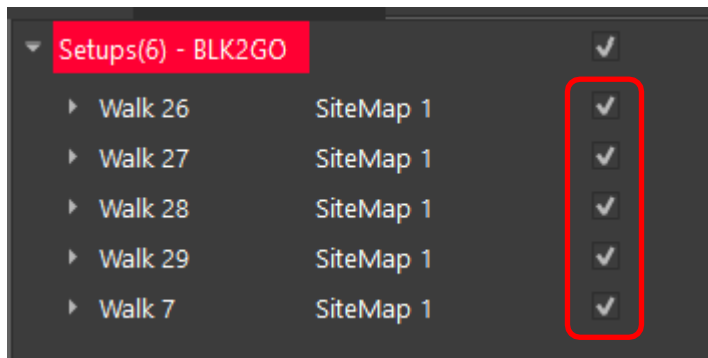
6. Then click the **Add to Project** button. This will display all available Walks to the import panel.



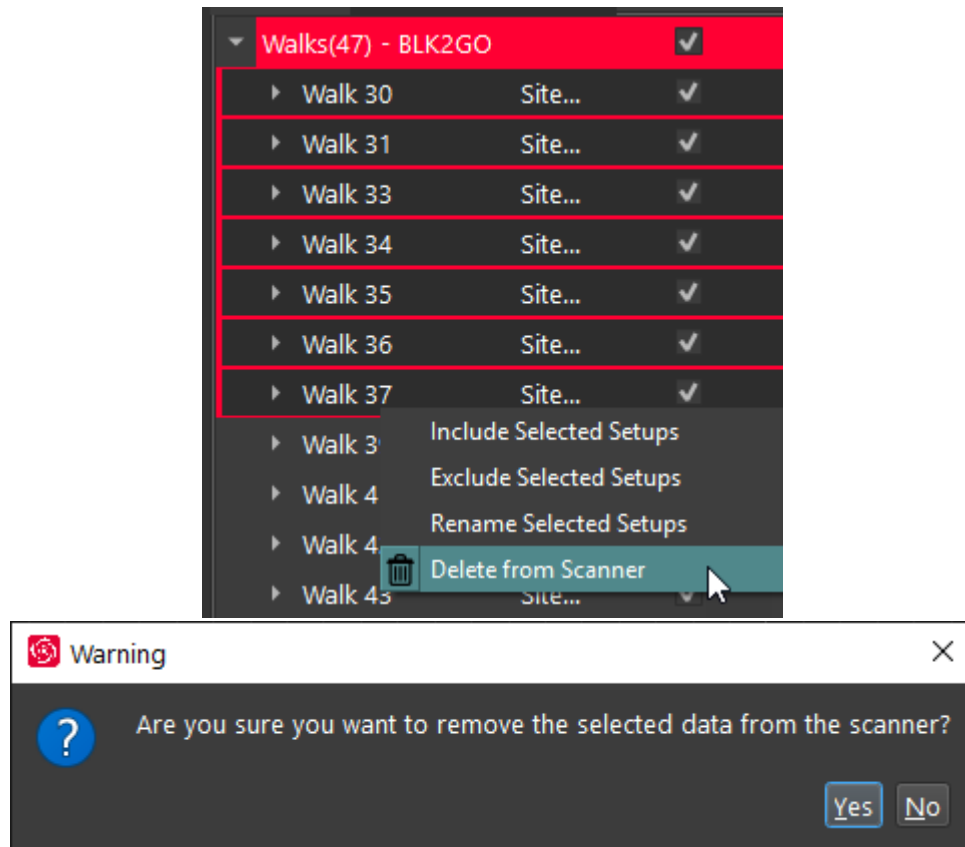
- Listed under each Walk is its data size, duration and the number of GeoTags it contains:



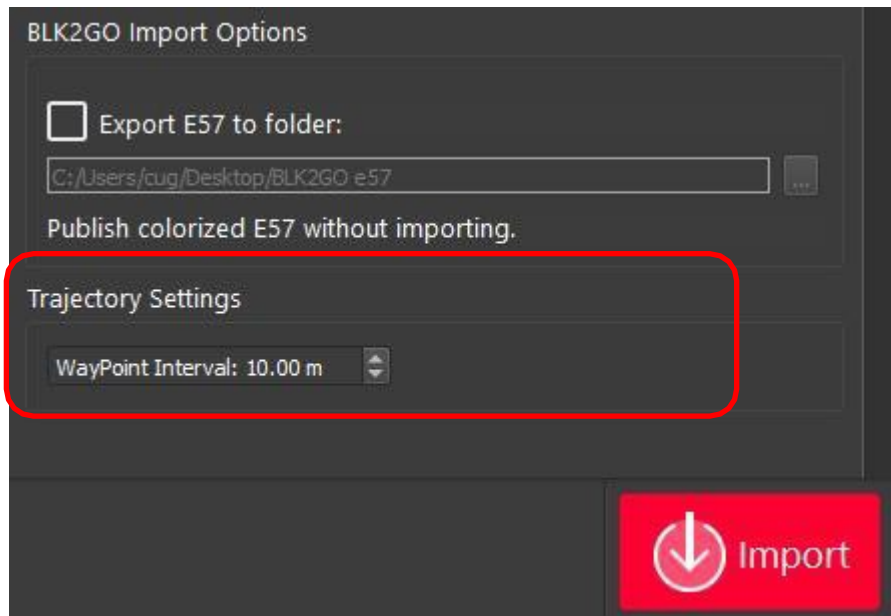
7. Select the Walks to import by using the check boxes to the right of each Walk.



8. Walks can be deleted from the scanner by right clicking selected Walks.



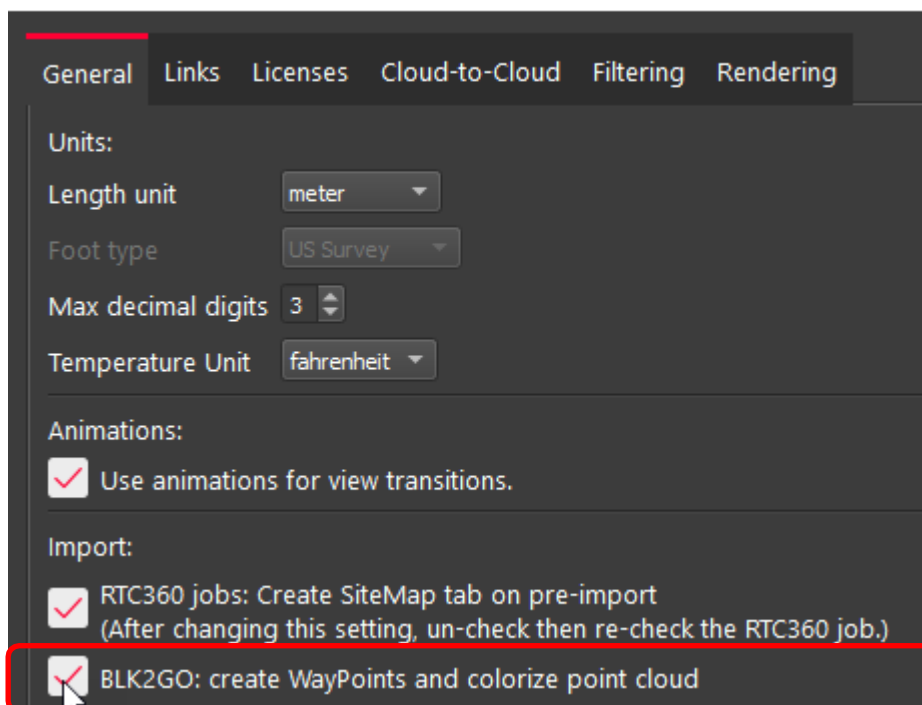
9. Then, on the lower right side of the import area, select the interval for WayPoint creation
 - The default is one WayPoint every 10 meters.
 - WayPoints are inserted Setup positions that only contain pano image data.
 - The shorter the interval, the more WayPoints will be created.
 - Each WayPoint will increase import time.
 - When finished there will be one-point cloud with several WayPoints that contain panoramic image data from a position along the trajectory.



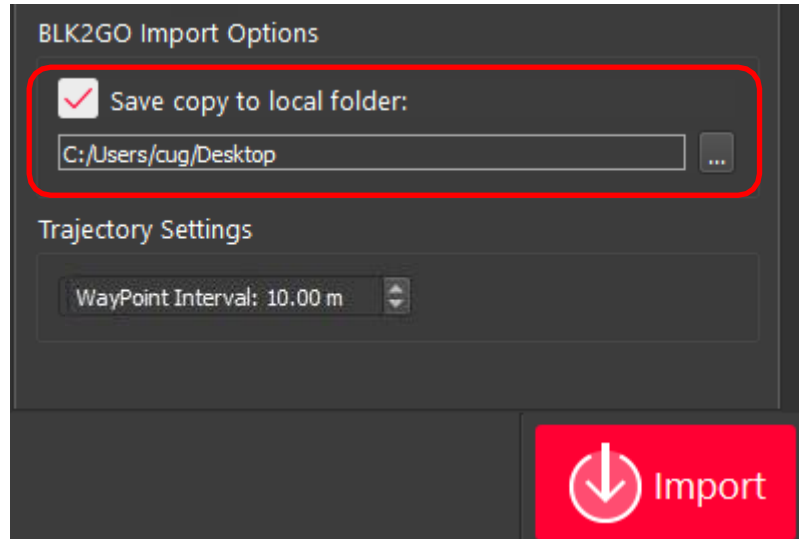
Note: increasing the number of WayPoints during import will result in longer import times.

- To save time importing BLK2GO data there is an option to import the data without colorizing the data or creating Waypoints that contain panos. To use this setting:
 - Go to the **Settings** and under the General tab un-check: **BLK2GO: create WayPoints and colorize point cloud**.

 Settings



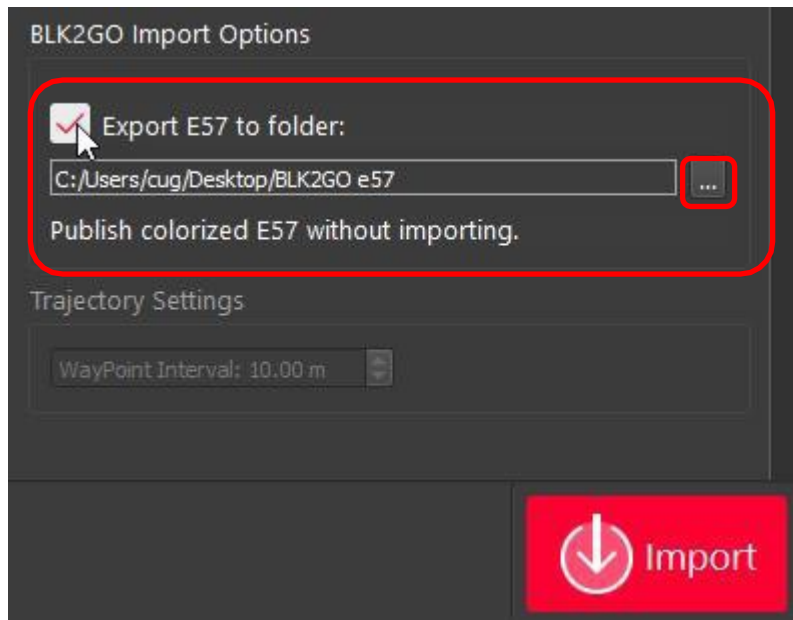
10. Click the **Save copy to local folder** check box and then select a download location using the browse button to save a local copy of the scanner data to disk. The file extension is *.b2g.
 - o Note: This step is not necessary but recommended as best practice. Please always store a backup of your raw data.



11. Click **Import** to begin the import process
12. Another import option is to create an E57 file directly from BLK2GO data in the import area. Using this option creates a colored E57 from BLK2GO data BUT **DOES NOT IMPORT THE DATA** into Cyclone REGISTER 360.

To use:

 1. Connect to scanner or load a *.B2G file into the import panel.
 2. Click the **Export E57 to folder** check box located in the lower right panel of the import area.
 3. Select a location on disk to write the E57 file.



4. Click the Import button to begin the process
5. An E7 file will be created.
6. The BLK2GO data will not be imported into Cyclone REGISTER 360
 - To import simply follow the regular import process

The E7 file created CANNOT be imported into REGISTER 360 2020 or earlier as the data is unstructured. Currently only unstructured data from a BLK2GO scanner is supported.

Cable connection import workflow:

1. Connect the included cable (USB A to USB C) to the scanner. The connection is in the battery compartment of the scanner:



2. Connect your scanner to your computer.
3. Continue with data download and import beginning with Step 2 in the WiFi workflow above.

Additional Import Options

1. The last section of the import stage is the map tool. This map can be used to acquire a satellite image to serve as a sitemap for the project. (Optional).



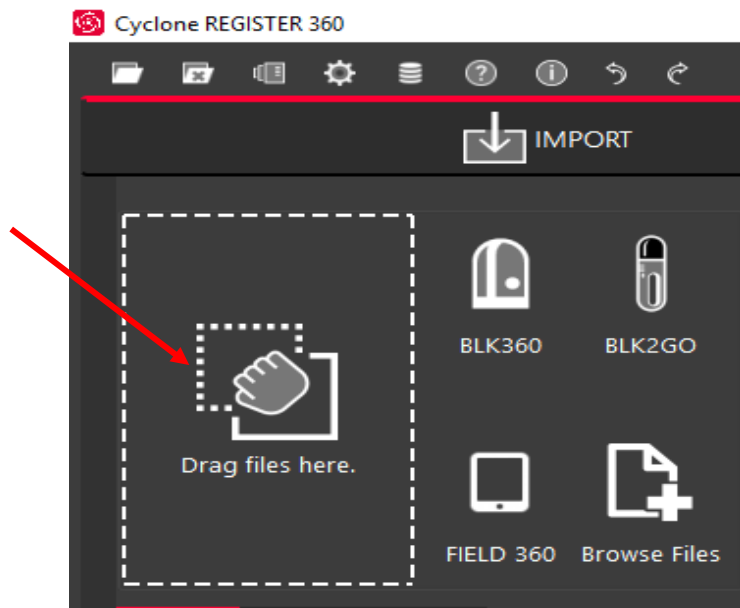
2. You must be connected to the internet to use the map.
 - 2.1 You can scroll to a known location or enter a street address, city name, or ZIP code. You must then click “Lookup” to search the map.



- 2.2 Once you are satisfied with the positioning of the image on screen, click “Get Image” to save the screen and automatically set it as your sitemap background image.



- 2.3 If you wish to use your own image as a sitemap, you can add that image via the “Drag files here” or “Browse Files” options.



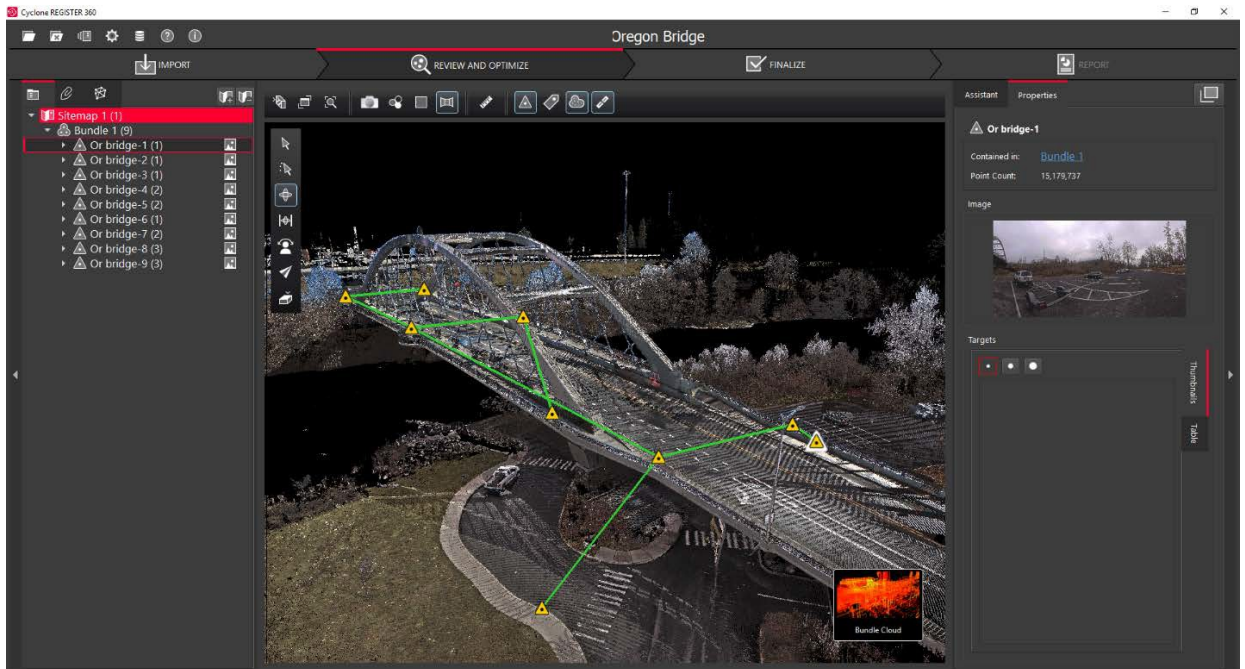
5. Once you are satisfied with the data that has been added and made the appropriate selections regarding registration options, click the large, red “Perform Import” button in the lower right corner of the screen.



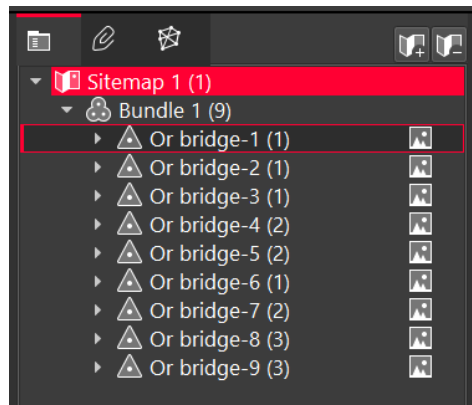
Please note that Cyclone REGISTER 360 BLK Edition only supports the import of BLK data from the BLK 360 and BLK2GO. If you wish to import other sensor data, please user Cyclone REGISTER 360.

Review and Optimize

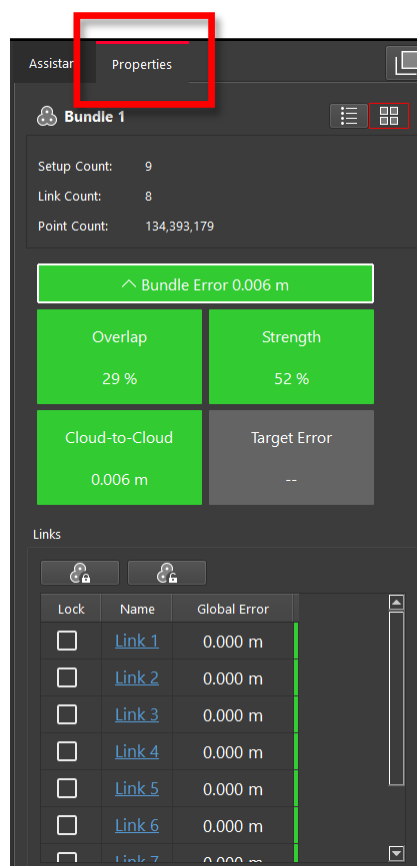
6. Once the import is complete, the user will be placed within the **Review and Optimize** stage. Here, they can QA and refine the registration and produce assets to include within the final Registration Report.



6.1. On the left-hand side, you will see a complete directory of all data within the project, clustered under three tabs: “Project” which contains sitemaps, bundles, setups, and links, “Assets” which includes all image assets both imported and those created via the “Capture Screen” button, and “Controls” which includes any imported .txt files containing survey control information.



6.2. The user can access the properties for an object by selecting that object in the project panel and viewing the “Properties” panel on the right-hand side of the screen.



6.3. The “Properties” panel can be viewed with “Advanced Mode” On or Off depending on whether the user wishes to see a more graphical or more tabular summary of their data. The Advanced mode also offers additional link options.

Assistant Properties

Bundle 1

Setup Count: 9
Link Count: 8
Point Count: 134,393,179
Bundle Error: 0.006 m

Error Measurements

Cloud-to-Cloud represents the Absolute Mean Error.

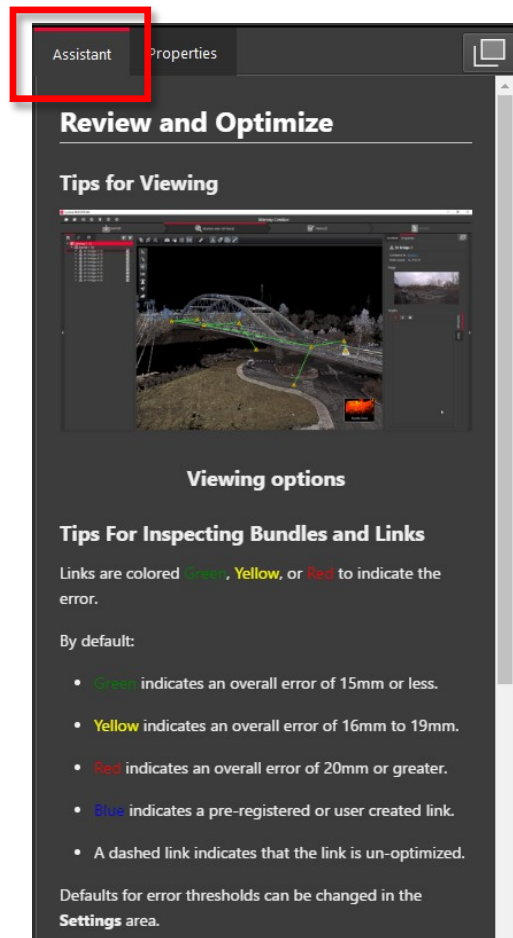
Global Error	Loop Error	Cloud2Cloud
0.000 m	0.000 m	0.006 m

Links

Cloud-to-Cloud represents the Absolute Mean Error.

Lock	Name	Global Error	Cloud-to-C
<input type="checkbox"/>	Link 1	0.000 m	0.004 r
<input type="checkbox"/>	Link 2	0.000 m	0.004 r
<input type="checkbox"/>	Link 3	0.000 m	0.013 r
<input type="checkbox"/>	Link 4	0.000 m	0.007 r
<input type="checkbox"/>	Link 5	0.000 m	0.004 r
<input type="checkbox"/>	Link 6	0.000 m	0.004 r
<input type="checkbox"/>	Link 7	0.000 m	0.007 r
<input type="checkbox"/>	Link 8	0.000 m	0.014 r

6.4. Next to the “Properties” panel, the “Assistant” panel contains specific advice and information pertaining to each stage of the registration.



6.5. Within the Review and Optimize stage, the user may refine their registration through a variety of tools.

6.5.1. The user can delete setups and links and re-form them.

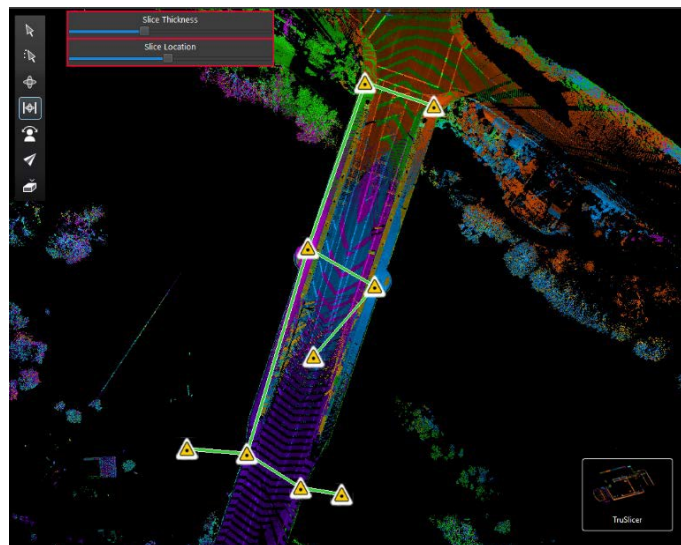
6.5.2. The user may also refit targets at this stage to improve the registration.

6.5.3. The user can set a unique User Coordinate System to orient their project for better viewing.

6.6. The user may view their project either as a “Sitemap” (2D, top-down) view, or as 3D cloud by hovering over the icon in the lower right-hand corner of the workspace and selecting the appropriate viewing option.



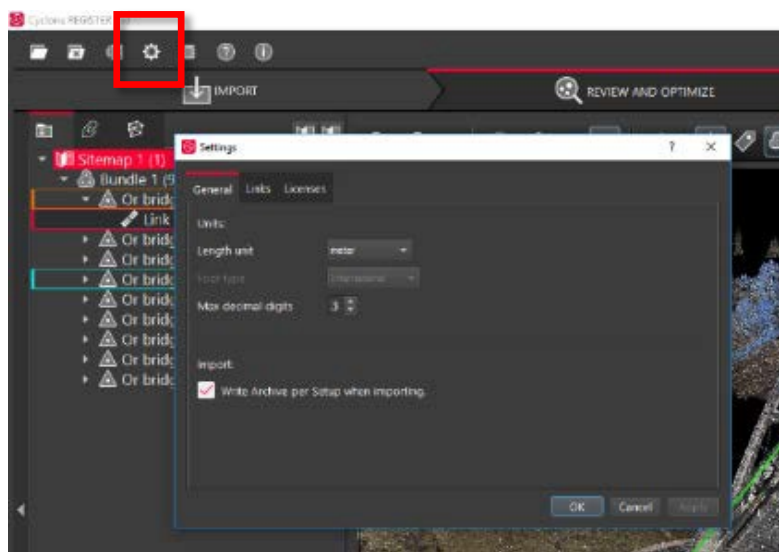
6.6.1. The user should use the “TruSlicer” view to QA their registration. The point clouds from each setup will be colored differently. A good alignment will show a thorough intermixing of colored points and matching geometry in areas of overlap. The user can control the thickness and location of the slice via the sliders at the top left of the workspace.



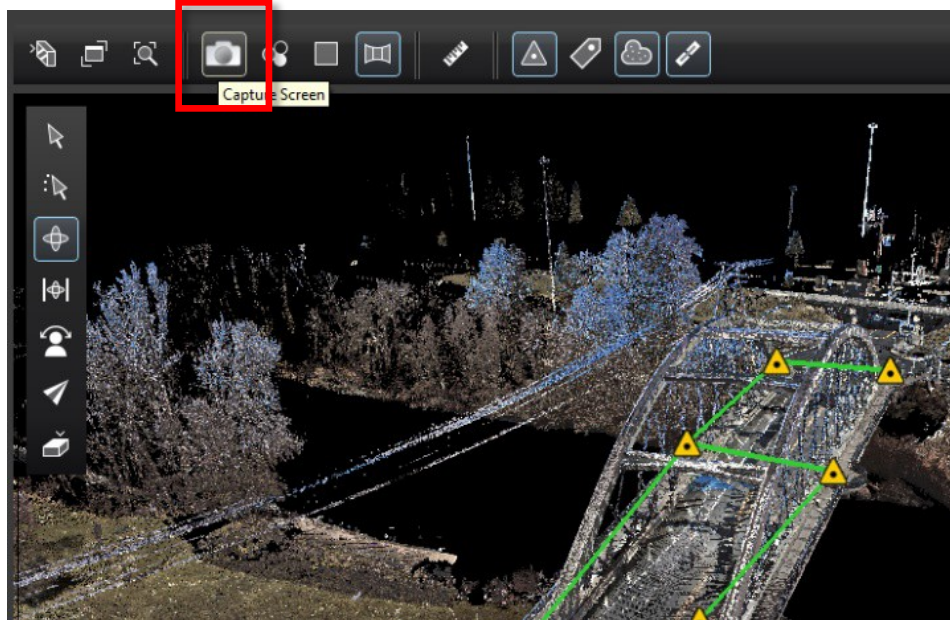
6.7. Depending on the user’s selection, a “Navigation” bar may appear in the top left of the workspace or an “Action Bar” at the bottom that will enable different tools that are only accessible with the user’s present selection.



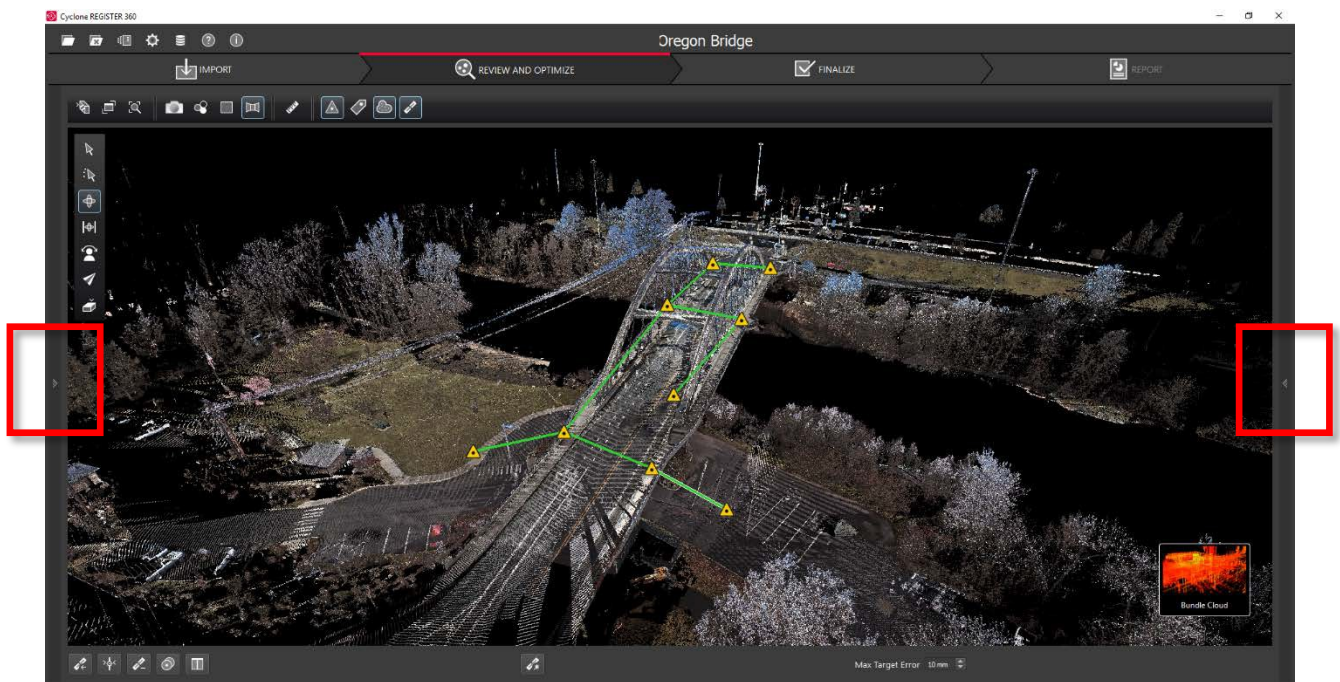
6.8. At any point, the user may access their “Settings” by clicking on the gear icon at the very top left of the screen to change units and set the error threshold for green, yellow and red links.



6.9. At any point, the user may click the “Capture Screen” button to save an asset which can be chosen to include in their final Registration Report. These assets will appear in the “Asset” tab in the project panel at left.

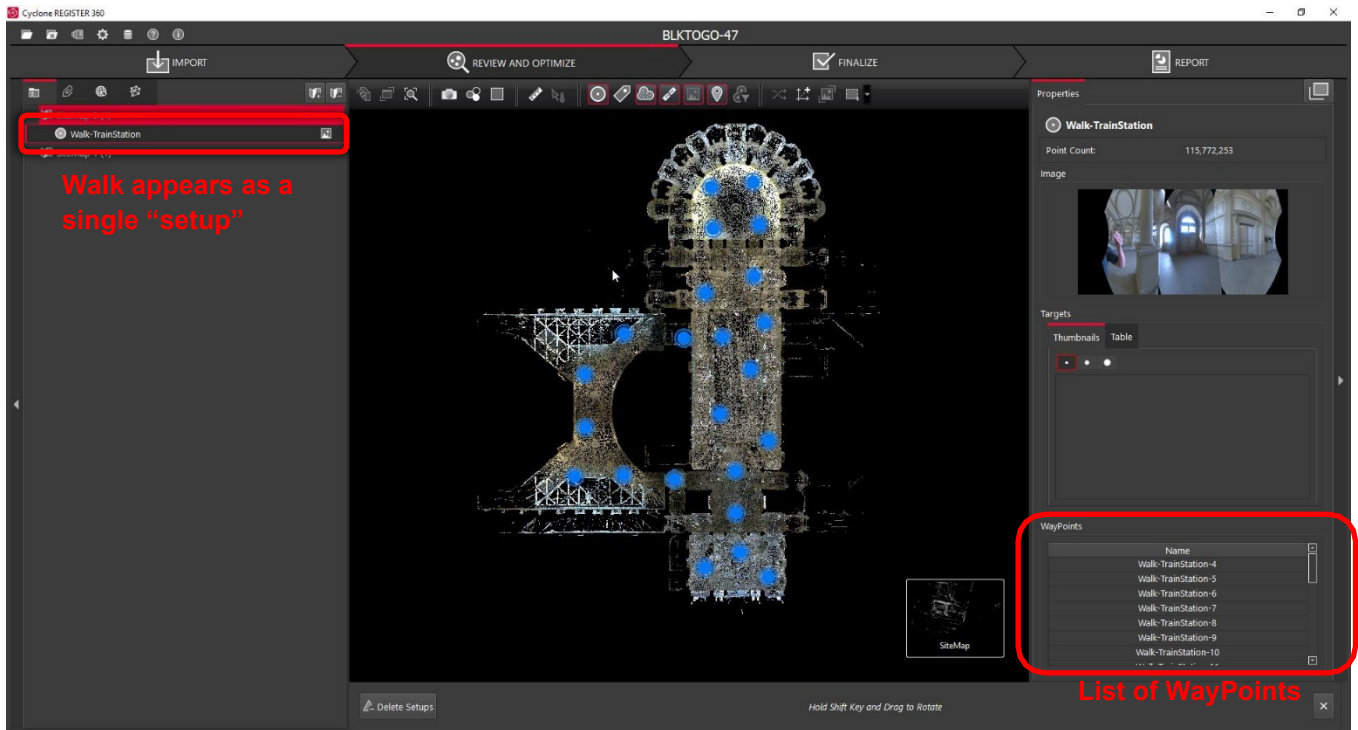


6.10. To increase working space, the user may collapse either or both side panels by clicking the arrow at the sides of the panel.

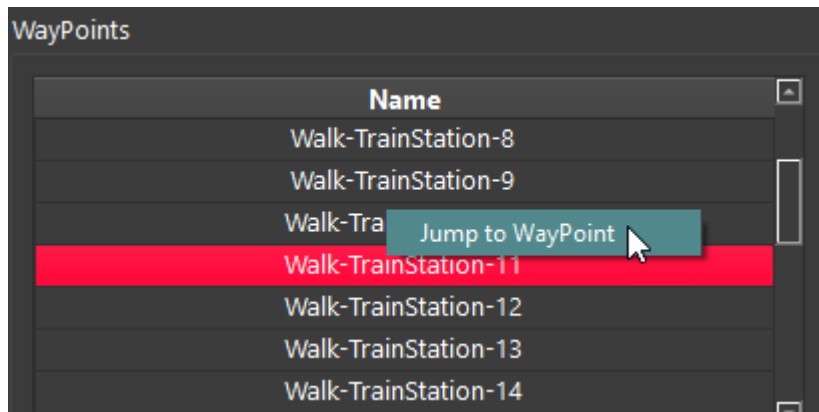


6.11. Review and Optimize BLK2GO workflow

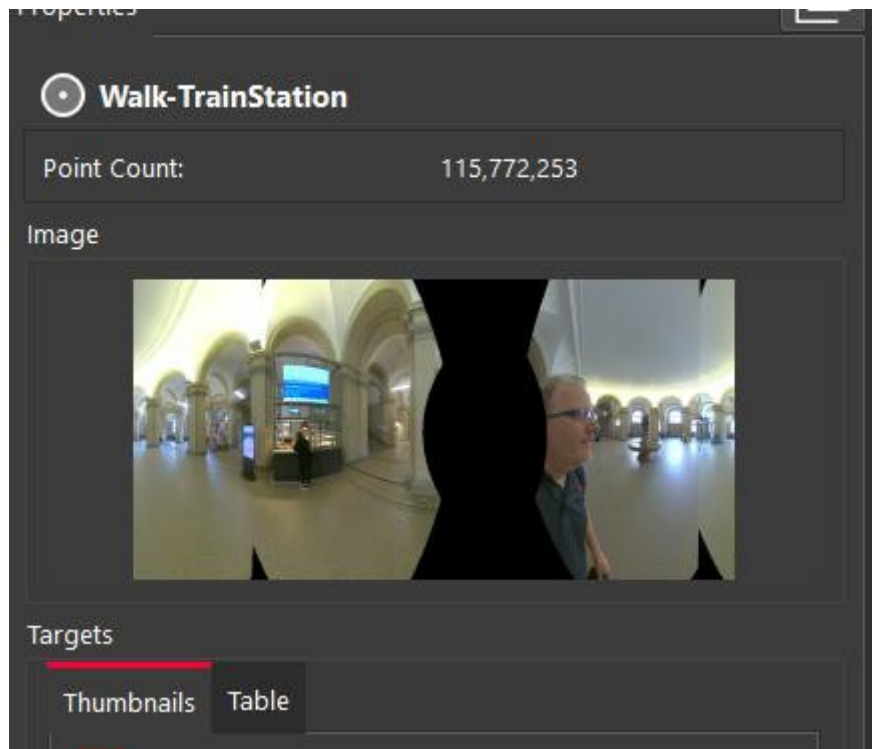
The BLK2GO Walk (a unique BLK2GO capture event with images and GeoTags) will appear in the SiteMap area as a single setup with the number of WayPoints determined by the user-defined settings during import.



- Each WayPoint contains a panoramic image to support traditional visualization options. The WayPoint locations are listed in the right panel under WayPoints.
 - Fly into a selected WayPoint from the right-side menu by right clicking WayPoints and selecting **Jump to WayPoint**:



- Scroll through all WayPoints using the up and down arrow keys on the keyboard.
 - The Image will change in the right-side panel showing the different WayPoint preview images:

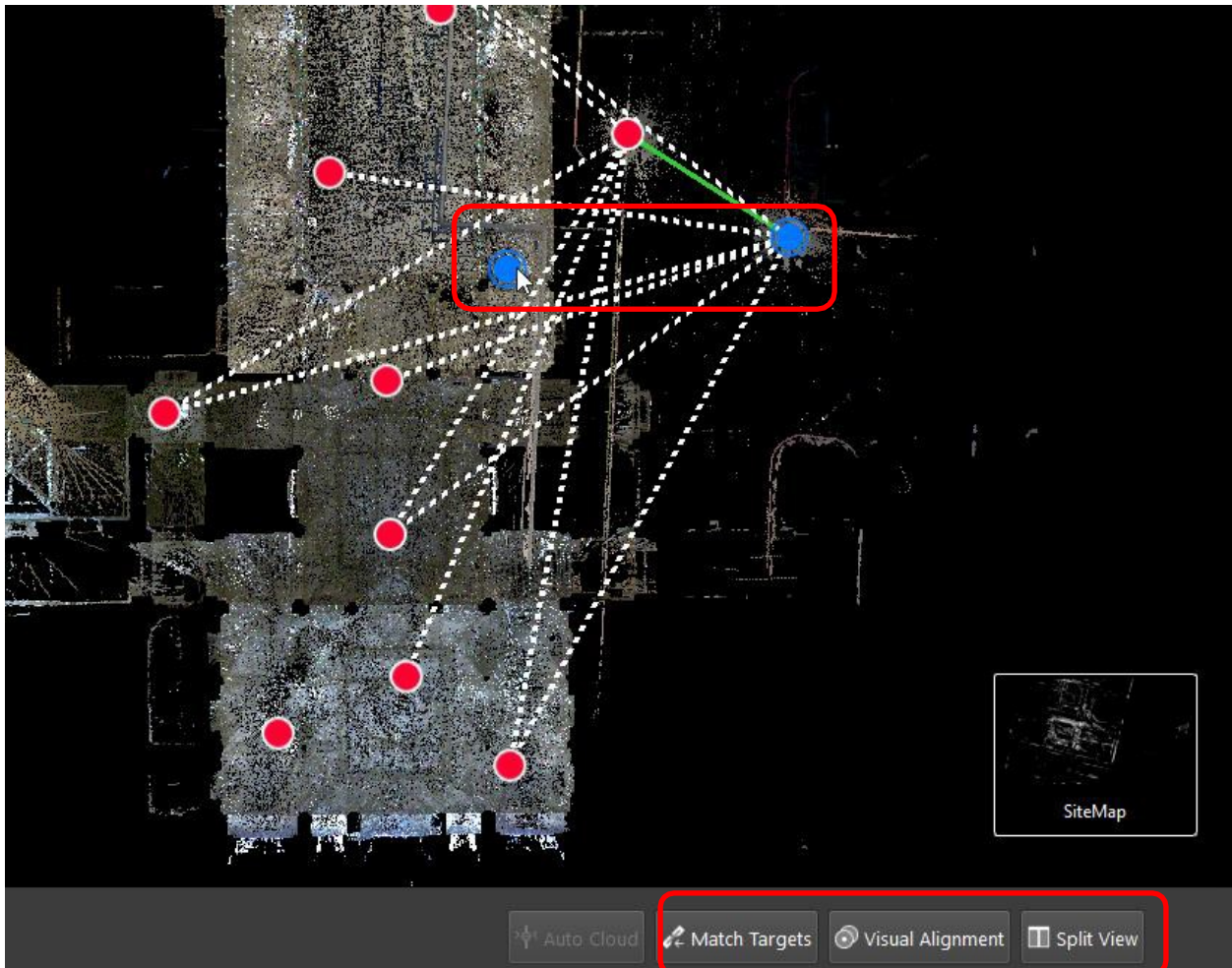


Each WayPoint has the following abilities:

- Fly into the point cloud to view panoramic images and the point cloud.
- Selection in the SiteMap to Pan and Rotate scan
- Selection in the SiteMap area with another Setup to perform registration by:
 - Visual Alignment
 - Target matching (with inserted targets)
 - Registration to another BLK2GO Walk or scanner Setup (e.g. RTC360, BLK360, P-Series, C-Series, 3rd party scans)
- Publish to Jetstream Enterprise, LGS file(s) and TruView as Panoramic image setup locations

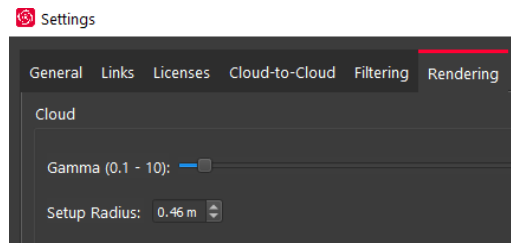
Visual Registration with BLK2GO data is performed in the same manner as for any other data imported into Cyclone REGISTER 360.

1. In the SiteMap area, select a single Setup or WayPoint and then Multi-Select another Setup or WayPoint.
 - Fence selection will also work to select the desired Setups and WayPoints.
2. Move the Setup and/or Walk into the proximity of another to make suggested links appear.
 - Select a suggested link to enter the desired registration type.
3. Click the Visual Alignment button on the action bar to enter Visual Alignment.



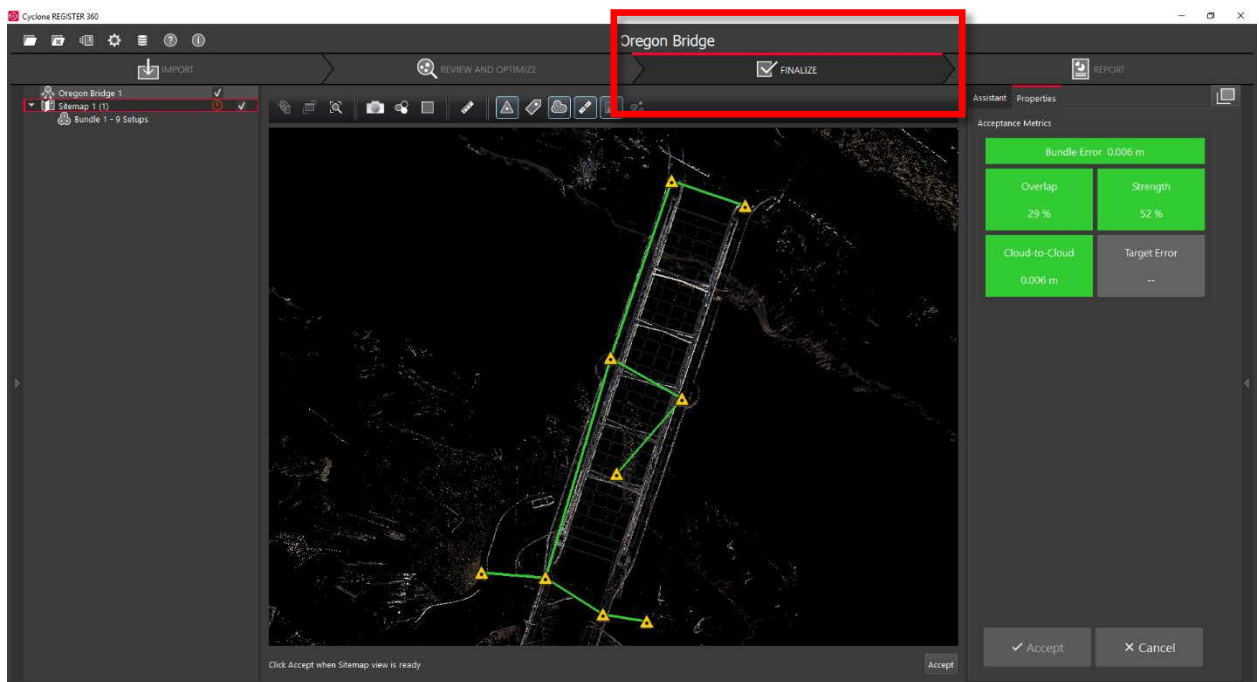
Two selected objects shown. One is a Setup and the other is a WayPoint. Once selected, various methods can be used to join the scans together.

The size of the sphere can be changed in the Settings Menu under the Rendering tab:

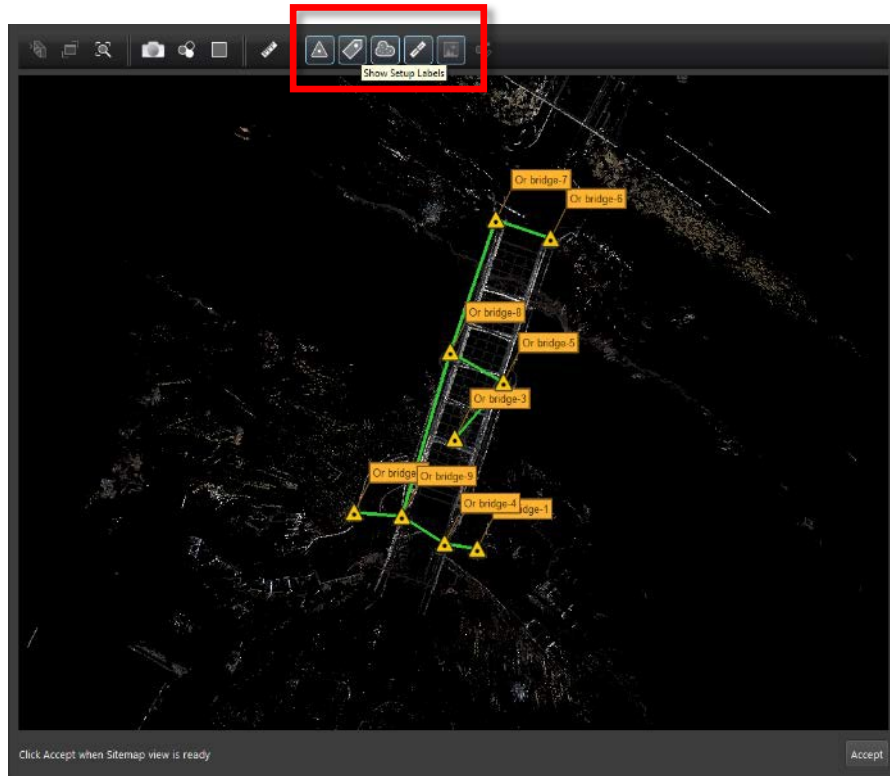


Finalize

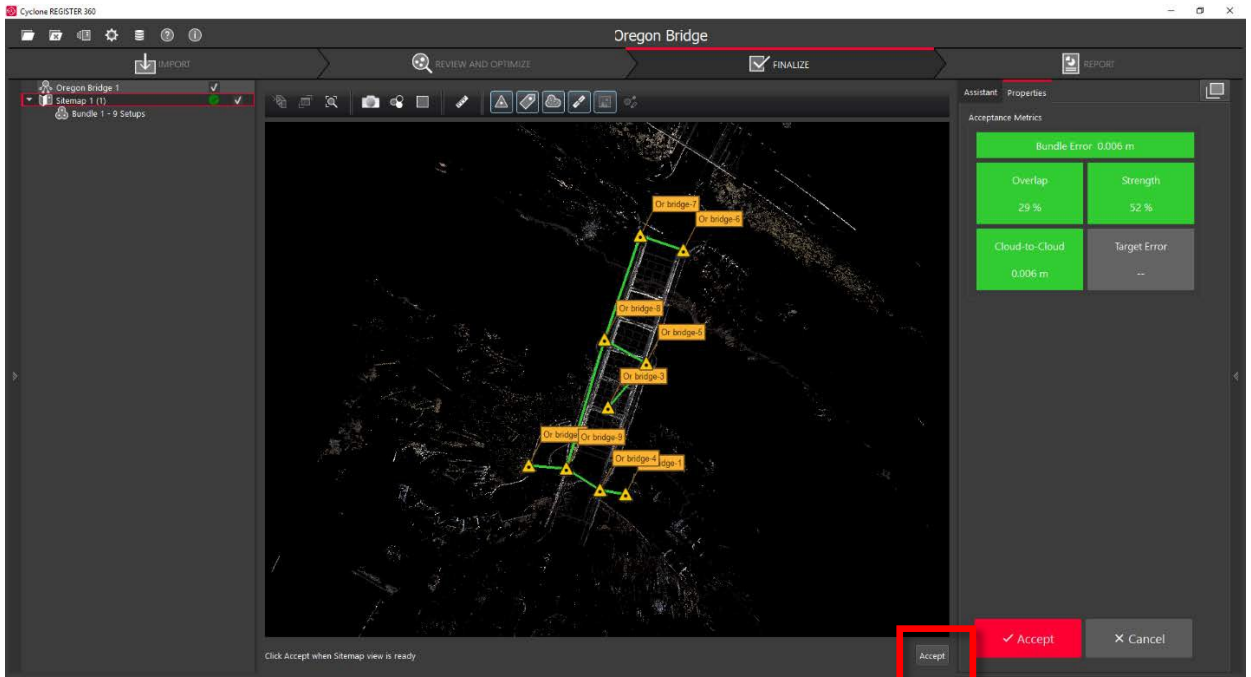
7. Once the user is satisfied with their registration, they may move on to the **Finalize** stage by clicking the "Finalize" bar at the top of the screen.



7.1. Within the “Finalize” stage the user can make final adjustments to the presentation of their project by turning On or Off the point cloud, setups, links, sitemap, and setup labels.



7.2. When the user is satisfied with the presentation of the image, they may click “Accept” in the Action Bar. This will freeze the image on screen to serve as the Registration Report cover image.

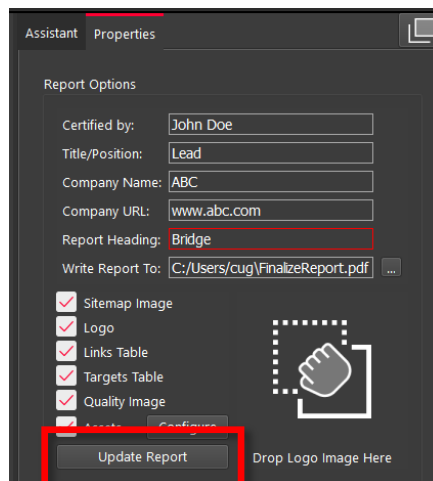


7.3. Then click the large, red “Accept” button in the Properties panel to advance to the Report stage.

Report

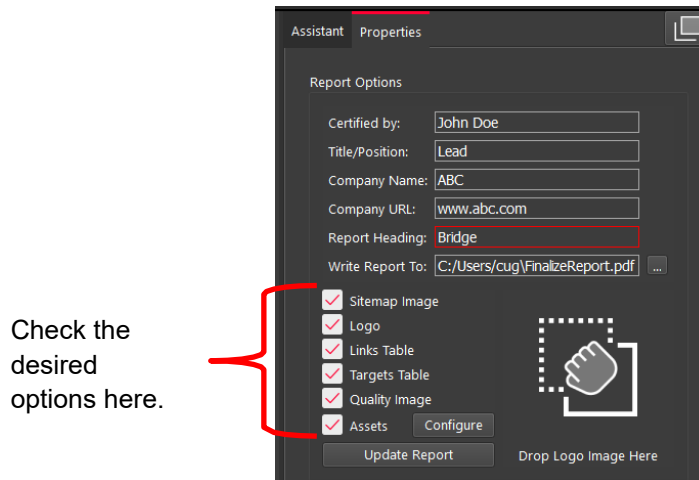
8. Within the **Report** stage, the user will have many customization options.

8.1. They may enter their name under the “Certified by” line as well as their Title or Position, Company Name, and URL as well as a Heading for the Registration Report. To update the Report with this information, click “Update Report.”



8.2. The user may also select what they want to include within their report by checking or unchecking the boxes for the sitemap image (the large image captured in the Finalize stage), a logo (which

they can add via Drag-and-Drop next to the check boxes, the Links Table, Targets Table (histogram of errors for links displayed as a matrix of setups), and Assets. To select or deselect individual assets for inclusion, the user may click “Configure.”

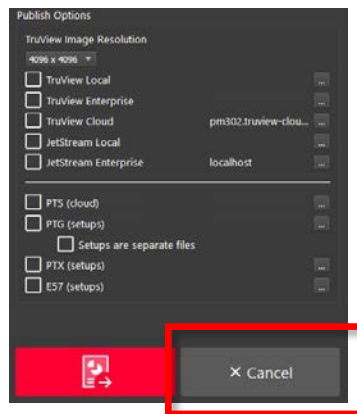


8.3. Lastly, the user has many publishing options for how they wish to share their project. The Registration Report will always be created as a .pdf, however the user can choose to optionally publish their project to TruView Local, TruView Enterprise, JetStream Enterprise or LGS if they have a Cyclone PUBLISHER or Cyclone PUBLISHER Pro License, TruView Cloud if they have a TruView Cloud subscription. Publishing to E57 and other industry standard formats does not require a PUBLISHER license. *Users of Cyclone REGISTER 360 (BLK Edition) also gain access to free RCP publishing with no PUBLISHER license required.*

Desired Data Destination	Required License	Required Product
Cyclone	Cyclone REGISTER or Cyclone MODEL or Cyclone SURVEY	Cyclone 9.2 or newer
TruView Local	Cyclone PUBLISHER or Cyclone PUBLISHER Pro	TruView Local (ActiveX plugin for Microsoft Internet Explorer)
TruView Enterprise	Cyclone PUBLISHER or Cyclone PUBLISHER Pro	TruView Enterprise <i>*TruView Enterprise 3.0 or newer is required for support of Cyclone REGISTER 360 Projects with multiple sitemaps.</i>
TruView Cloud	Active TruView Cloud Subscription	TruView Cloud Subscription service <i>*TruView Cloud 3.0 or newer is required for support of Cyclone REGISTER 360 Projects with multiple sitemaps.</i>
JetStream Enterprise	Cyclone PUBLISHER or Cyclone PUBLISHER Pro	JetStream Enterprise 1.4 or newer and desired compatible viewer/plugin (JetStream Viewer, CloudWorx or MultiWorx product)
JetStream Local/Viewer	Cyclone PUBLISHER or Cyclone PUBLISHER Pro	JetStream Viewer 1.4 or newer JetStream Viewer 1.4.1 or newer if HDR imagery is desired

	**Creates *.jsv files for viewing point clouds and imagery in JetStream Viewer	
E57	No additional license required	E57 compatible products of users' choice
PTX	No additional license required	PTX compatible products of users' choice
PTS	No additional license required	PTS compatible products of users' choice
PTG	No additional license required	PTG compatible products of users' choice
LGS	Cyclone PUBLISHER or Cyclone PUBLISHER Pro	Cyclone 9.3 or newer, JetStream Viewer or Enterprise 1.5 or newer, TruView 3.6 or Newer, CloudWorx 2.2 for Revit, CloudWorx 1.1 for Navisworks, CloudWorx 6.4 for AutoCAD, CloudWorx 1.0 for BricsCAD, 3DReshper
RCP	Cyclone PUBLISHER or Cyclone PUBLISHER Pro for Cyclone REGISTER 360 NO ADDITIONAL LICENSE REQUIRED FOR BLK EDITION	Cyclone REGISTER 360 or Cyclone REGISTER 360 (BLK Edition) 2020 or newer and an RCP compatible CAD package

8.4. The user should select all of the publication outputs they wish to produce from this list and then click the large, red “Publish” button in the properties panel. This will allow for single, batch publishing of all your selected outputs.



8.5. All the outputs will be created and saved to the location designated by the user.